

L.Nemitsas Ltd - Head Office

P.O.Box 54436

3724 Limassol, Cyprus

Tel: +357 25569225 & 25569226

Fax: +357 25 396955

L.Nemitsas Ltd - Nicosia Branch

F.Tsigaridi 19 Str.

2235, Latsia - Nicosia

Tel: +357-22467366

Fax: +357-22467372



E-mail: [info@nemitsas.eu](mailto:info@nemitsas.eu)

URL: [www.nemitsas.eu](http://www.nemitsas.eu)



## **SUBMERSIBLE ELECTROPUMPS 50 HZ**

# **WATER SYSTEMS**



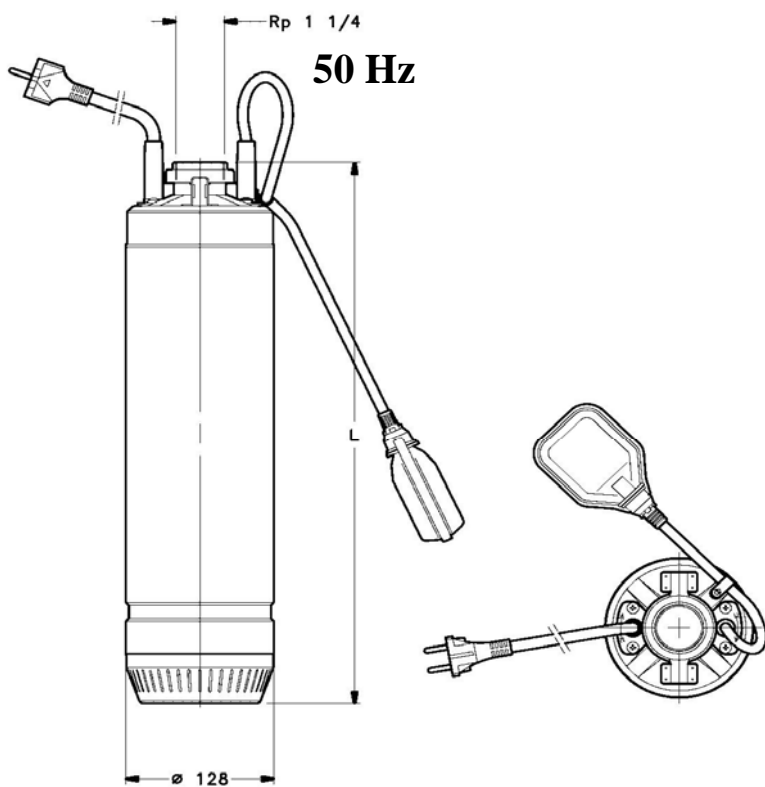


# CLOSE-COUPLED 5" SUBMERSIBLE PUMPS.

EN5

Series

5" Submersible  
Electric Pumps



Manufactured by: L.NEMITSAS LTD Limassol – Cyprus  
Web: [www.nemitsas.eu](http://www.nemitsas.eu)  
E-mail: [info@nemitsas.eu](mailto:info@nemitsas.eu)  
Tel: +357 25569225-26 Fax: +357 25396955



## NEMITSAS EN5 SERIES CLOSE-COUPLED 5" SUBMERSIBLE PUMPS – 50Hz.

Multistage centrifugal submersible clean water pumps with high efficiency and reliability make them suitable for pumping clean water in domestic, civil, industrial or agricultural. Particularly suitable for drinkable water supplying, washing, for distributing water in combination with pressure systems, for irrigating gardens, supplying fountains etc.

### Features

The pump is particularly noiseless and avoiding suction and turns off problems.

The pump with hydraulic parts installed under the motor which is cooled by the pumped liquid.

The thermoplastic S/S impellers and GE-PRO diffusers offer high abrasion resistance.

The Italian double mechanical seals ensure long life and enhance reliability.

Oil chamber with non-toxic cooling oil.

Self-lubricating ball bearings.

Cast iron coated with polybutadiene varnish by electrophoresis for antirust.

Discharge connection 1 1/4"

### Motor

Asynchronous 2 poles dry motor with stainless steel casing cooled by the pumped liquid, which suits for continuous duty.

Insulation class: F

Protection: IP68

All motors with thermal overload protector built into windings.

Single phase: 230±10% V - 50 Hz can be supplied with or without float switch for automatic operation or manual operation. Version with capacitor connected inside the pump or external control box also available. And it includes 15 m of PVC or H07RN-F power cable with plug.

Three-phase: 400±10% V - 50 Hz supplied with 15 m of PVC or H07RN-F power cable. Electric control panel available on request

### Operating conditions

Pumped liquid: clean water with no suspended solids or abrasive materials.

The pump can not operate in dry conditions.

Water temperature from 1°C to 40°C

Maximum immersion depth: 20 m (with suitable cable length),  
10m with float switch

Minimum submerged level for continuous duty is 150mm.

Vertical or Horizontal position installation

Maximum number of starts: 20 times per hour at regular intervals

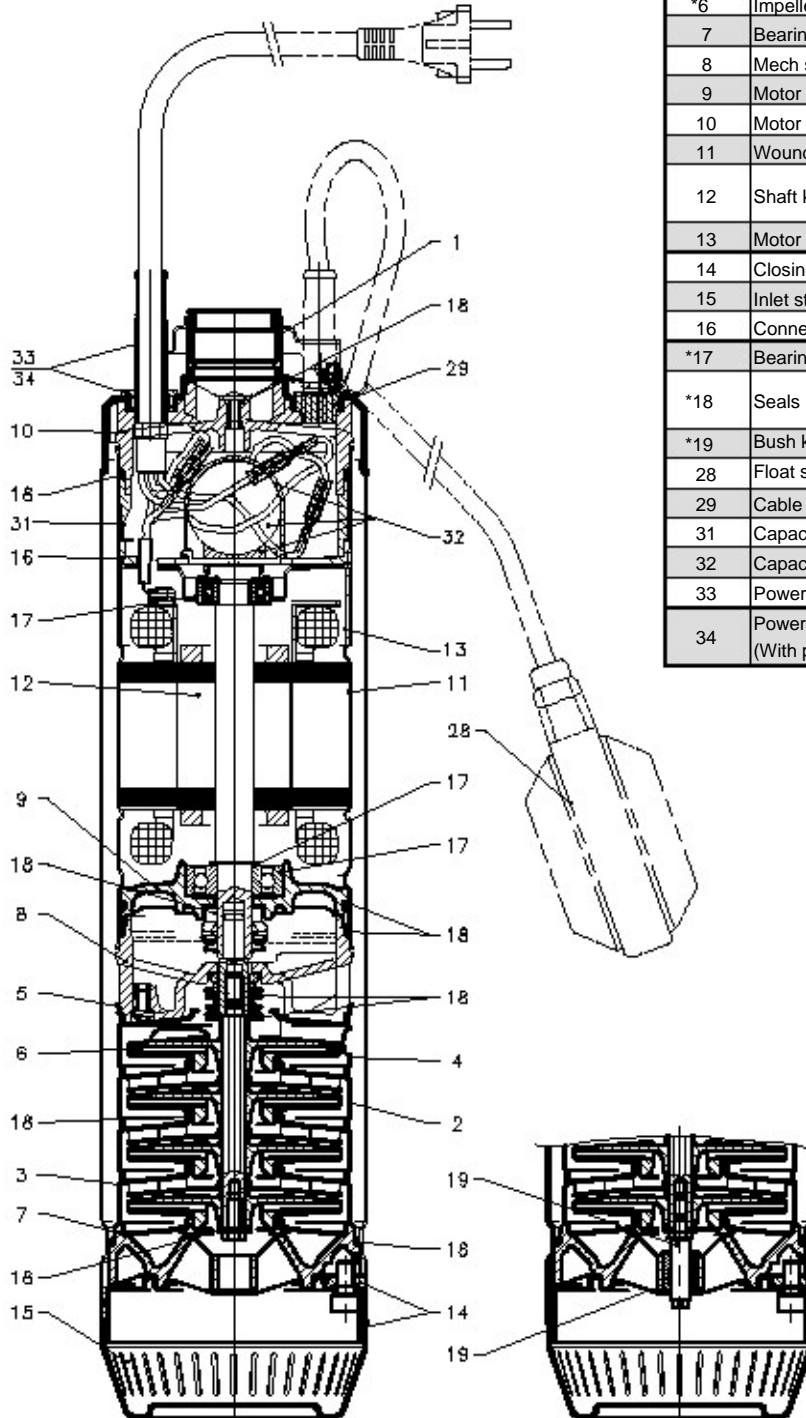
### Special available on request

Other voltages & 60Hz versions;





NEMITSAS – EN5  
PUMP SECTION AND LIST OF MAIN COMPONENTS

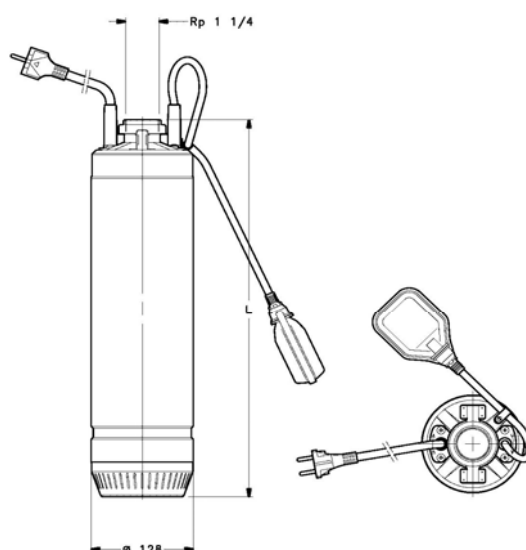


REF. N.	DESCRIPTION
1	Outer sleeve
*2	Diffuser
*3	Initial bowl
*4	Final diffuser
*5	Final bowl
*6	Impeller
7	Bearing spider
8	Mech seal housing
9	Motor lower bearing bracket
10	Motor head
11	Wound stator
12	Shaft kit (motor pump shaft + bearings)
13	Motor upper bearing bracket
14	Closing flange kit
15	Inlet strainer
16	Connection container
*17	Bearings kit
*18	Seals kit
*19	Bush kit
28	Float switch kit
29	Cable entry plug kit
31	Capacitor housing spacer
32	Capacitor
33	Power cable three-phase kit
34	Power cable single-phase kit (With plug)



## NEMITSAS – EN5 MATERIALS

NAME	MATERIAL	REFERENCE STANDARDS	
		EUROPE	USA
Sleeve with head	Stainless steel	EN 10088-1-X5CrNi18-10 (1.4301)	AISI 304
Upper bearing support	Stainless steel	EN 10088-1-X5CrNi18-10 (1.4301)	AISI 304
Sleeve with wound stator	Stainless steel	EN 10088-1-X5CrNi18-10 (1.4301)	AISI 304
Strainer	Stainless steel	EN 10088-1-X5CrNi18-10 (1.4301)	AISI 304
Shaft extension	Stainless steel	EN 10088-1-X5CrNiMo17-12-2 (1.4401)	AISI 316
Screws	Stainless steel	EN 10088-1-X5CrNi18-10 (1.4301)	AISI 304
Impeller	Stainless steel	EN 10088-1-X5CrNi18-10 (1.4301)	AISI 304
Diffuser	GE-PRO		
Head	PPS Ryton		
Lower head	PPS Ryton		
Lower bearing support	Die-cast aluminum		
Bush support	PPS Ryton		
Bush bearing	Laripur		
Elastomers	Nitrile rubber		
External mechanical seal	Silicon carbide		
Internal mechanical seal (fixed part)	Steatite		
Internal mechanical seal (rotary part)	Carbo-graphite		



Single phase	Three phase	NUMBER OF STAGES	HP	KW	Input		A		Capacitor		Q.Capacity							
					KW						1/min	20	40	50	60	80	100	120
					230V	400V	230V	400V	uF	V	0	1.2	2.4	3	3.6	4.8	6	7.2
220V 50Hz	380V 50Hz				230V	400V	230V	400V	uF	V	Head in m							
EN5-205M	EN5-205	4	0.5 5	0.75	0.92	0.85	4.2	1.6	18	450	48	44	37	32	27			
EN5-207M	EN5-207	5	0.7 5	1.0	1.15	1.05	5.2	1.9	25	450	61	57	48	41	35			
EN5-209M	EN5-209	6	0.9	1.2	1.32	1.25	5.8	2.1	25	450	73	66	56	49	42			
EN5-211M	EN5-211	7	1.1	1.5	1.5	1.5	6.6	2.6	30	450	85	78	66	59	50			
EN5-407M	EN5-407	4	0.7 5	1.0	1.2	1.1	5.4	2.0	25	450	50		43	41	38	33	26	17
EN5-409M	EN5-409	5	0.9	1.2	1.4	1.35	6.3	2.3	25	450	63		52	50	47	40	33	20
EN5-411M	EN5-411	6	1.1	1.5	1.65	1.6	7.4	2.7	30	450	76		64	60	57	49	40	25