

L.Nemitsas Ltd - Head Office

P.O.Box 54436

3724 Limassol, Cyprus

Tel: +357 25569225 & 25569226

Fax: +357 25 396955

L.Nemitsas Ltd - Nicosia Branch

F.Tsigaridi 19 Str.

2235, Latsia - Nicosia

Tel: +357-22467366

Fax: +357-22467372



E-mail: [info@nemitsas.eu](mailto:info@nemitsas.eu)

URL: [www.nemitsas.eu](http://www.nemitsas.eu)



# PUMPS



## SUBMERSIBLE ELECTROPUMPS 50 HZ

# WATER SYSTEMS





STAINLESS STEEL SUBMERSIBLE BOREHOLE PUMP

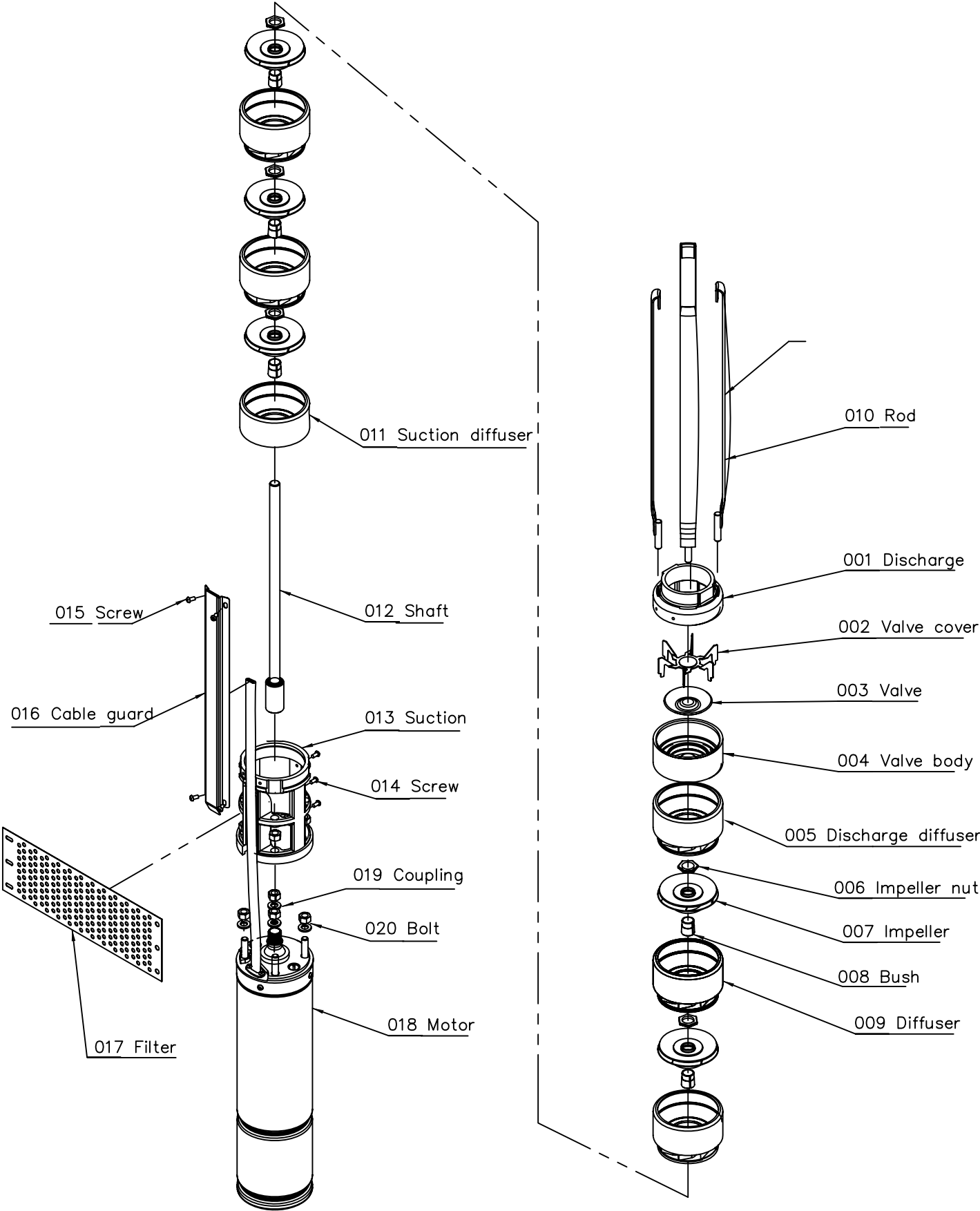
## EN4L, EN4S, EN4P. Series

4'' Submersible  
Electric Pumps

**50 Hz**



# 4" Parts List



# EN4L-SERIES

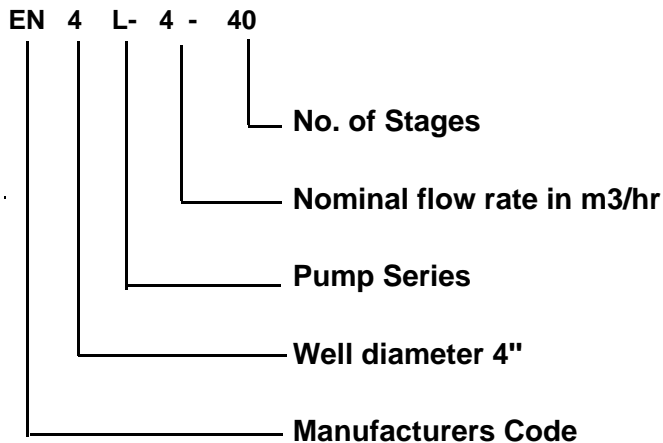


## TABLE OF MATERIALS

Name	MATERIAL	REFERENCE STANDARDS	
		EUROPE	USA
Pump external casing	Stainless Steel	EN 10088-1 - X5CrNi18-10 (1.4301)	AISI 304
Delivery casing	Cast Cu	BS EN 1982:2008	ASTM280
Suction lantern	Cast Cu	BS EN 1982:2008	ASTM280
Stage casing	Plastic PPO	EN 10088-1 - X5CrNi18-10 (1.4301)	PRO
Impeller	Plastic PPO	EN 10088-1 - X5CrNi18-10 (1.4301)	PRO
Shaft	Stainless Steel	EN 10088-1 - X5CrNi18-10 (1.4301)	AISI 304
Filter	Stainless Steel	EN 10088-1 - X5CrNi18-10 (1.4301)	AISI 304

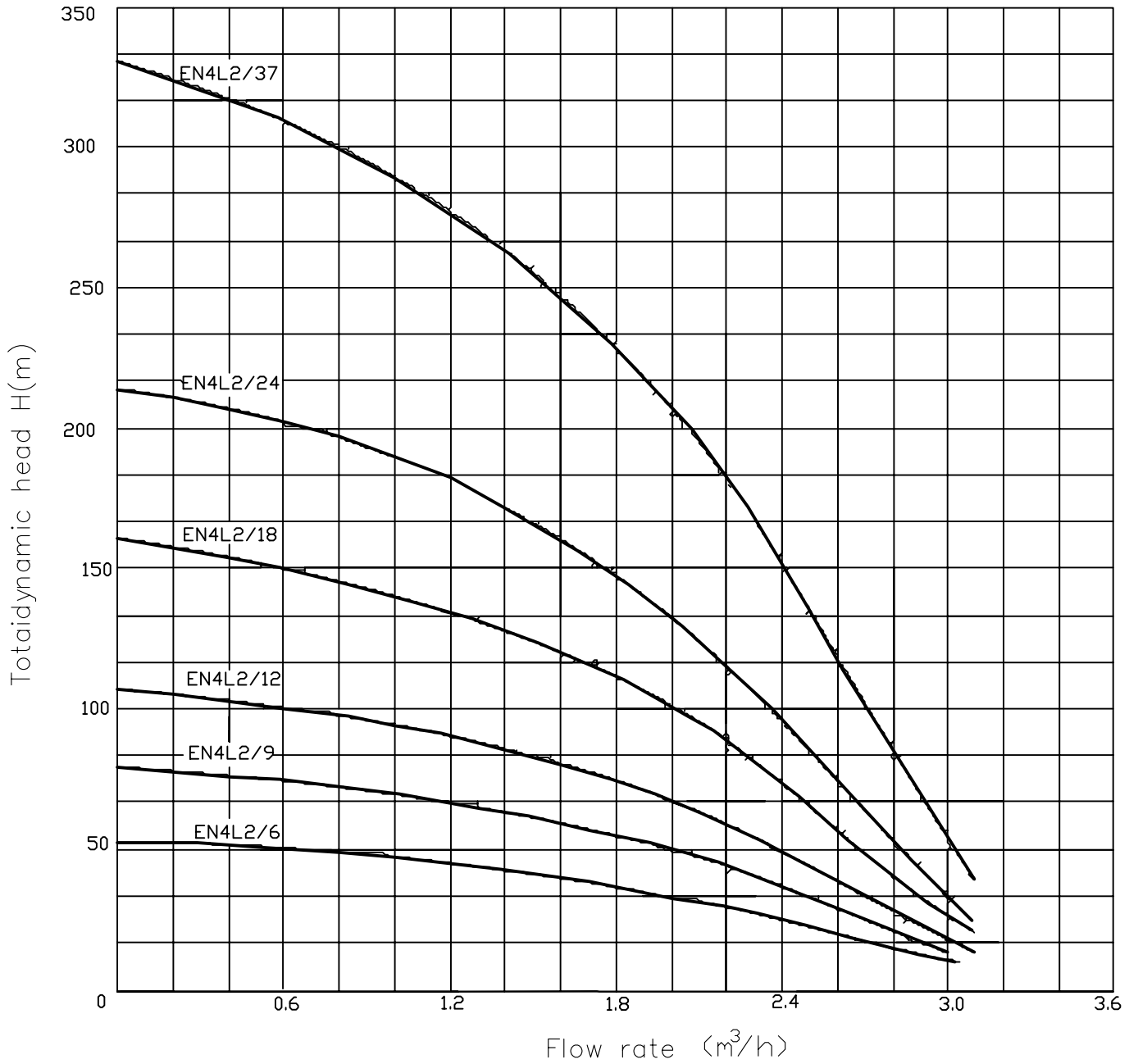
## PUMP IDENTIFICATION CODE

FOR EXAMPLE





# NEMITSAS PERFORMANCE CURVES AT 50 Hz



IMPELLER MATERIAL :Stainless Steel or Plastic PPO  
 BOWL MATERIAL :Stainless Steel or Plastic PPO

CONDITIONS OF TESTING : TEMPERATURE : 15°C SPEED : 2850 R.P.M.  
 These performances refer to cold water with no dissolved gases PRESSURE : 1Atm

## TYPE EN4L-2

WORKING CONDITIONS  
 Water temperature up to 55°C  
 Minimum internal diameter of well:102mm

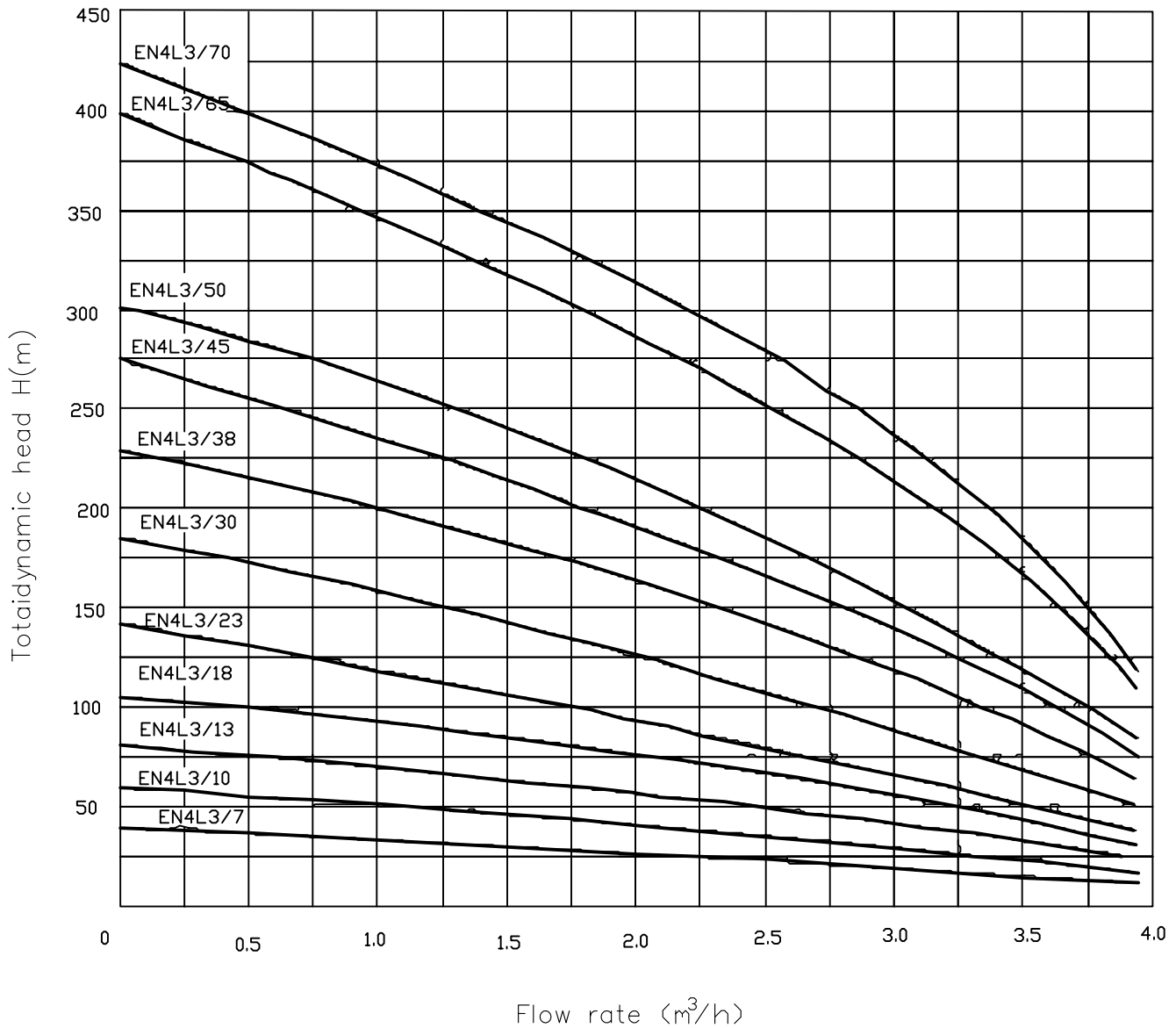
MODEL		P <sub>2</sub>		DELIVERY						DN	
1~ 220V-240V	3~ 380V-415V	KW	HP	Q m³/h l/min	n ≈ 2850r/min						
					0	0.6	1.2	1.8	2.4		3.0
EN4L-2-6M	EN4L-2-6	0.37	0.5	H(m)	0	10	20	30	40	50	1¼"/1½"
EN4L-2-9M	EN4L-2-9	0.55	0.75		52	50	45	35	23	10	1¼"/1½"
EN4L-2-12M	EN4L-2-12	0.75	1.0		78	75	68	55	35	13	1¼"/1½"
EN4L-2-18M	EN4L-2-18	1.1	1.5		108	100	89	75	50	16	1¼"/1½"
EN4L-2-24M	EN4L-2-24	1.5	2.0		158	150	134	110	73	24	1¼"/1½"
EN4L-2-37M	EN4L-2-37	2.2	3.0		212	203	180	145	95	30	1¼"/1½"
					328	310	278	225	150	50	1¼"/1½"

MANUFACTURED BY: L.NEMITSAS LTD. LIMASSOL-CYPRUS.

Tel:+35725569225 .Fax:+35725396955. E-mail: info@nemitsas.eu Web: www.nemitsas.eu



# NEMITSAS PERFORMANCE CURVES AT 50 Hz



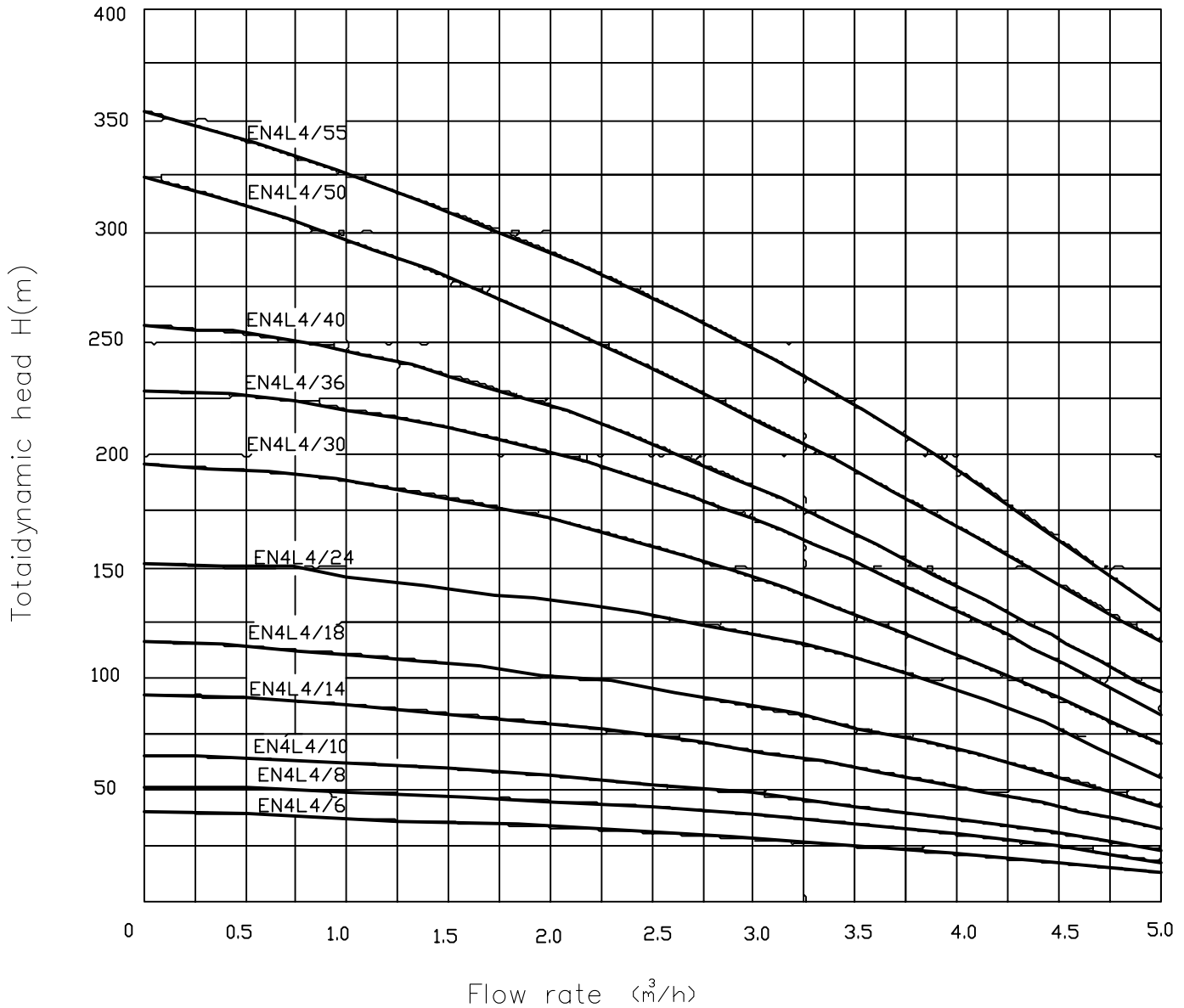
IMPELLER MATERIAL :Stainless Steel or Plastic PPO BOWL MATERIAL :Stainless Steel or Plastic PPO CONDITIONS OF TESTING : TEMPERATURE : 15°C    SPEED : 2850 R.P.M. <small>These performances refer to cold water with no dissolved gases</small> PRESSURE : 1Atm	<h2>TYPE EN4L-3</h2>	<b>WORKING CONDITIONS</b> Water temperature up to 55C Minimum internal diameter of well:102mm
--	--------------------------	---

MODEL		P <sub>2</sub>		DELIVERY      n ≈ 2850r/min									DN
1~ 220V-240V	3~ 380V-415V	KW	HP	Q <sup>m³/h</sup>	0	0.6	1.2	1.8	2.4	3.0	3.6	3.9	
EN4L-3-7M	EN4L-3-7	0.37	0.5	H(m)	43	40	37	34	30	25	18	12	1¼"/1½"
EN4L-3-10M	EN4L-3-10	0.55	0.75		61	57	53	49	43	35	25	17	1¼"/1½"
EN4L-3-13M	EN4L-3-13	0.75	1.0		79	74	69	64	56	46	33	22	1¼"/1½"
EN4L-3-18M	EN4L-3-18	1.1	1.5		110	102	96	88	78	64	45	30	1¼"/1½"
EN4L-3-23M	EN4L-3-23	1.5	2.0		140	130	123	113	100	81	58	38	1¼"/1½"
EN4L-3-30M	EN4L-3-30	2.2	3.0		183	170	160	147	130	106	75	50	1¼"/1½"
	EN4L-3-38	3.0	4.0		232	215	203	186	165	134	95	63	1¼"/1½"
	EN4L-3-45	3.7	5.0		275	255	240	220	195	159	113	75	1¼"/1½"
	EN4L-3-50	4.0	5.5		305	283	267	245	217	177	125	83	1¼"/1½"
	EN4L-3-65	5.5	7.5		397	368	347	319	282	230	163	108	1¼"/1½"
	EN4L-3-70	5.5	7.5		430	397	373	343	303	248	175	117	1¼"/1½"

MANUFACTURED BY: L.NEMITSAS LTD. LIMASSOL-CYPRUS.  
 Tel:+35725569225 .Fax:+35725396955. E-mail: info@nemitsas.eu Web: www.nemitsas.eu



# NEMITSAS PERFORMANCE CURVES AT 50 Hz



IMPELLER MATERIAL :Stainless Steel or Plastic PPO  
 BOWL MATERIAL :Stainless Steel or Plastic PPO

CONDITIONS OF TESTING : TEMPERATURE : 15°C SPEED : 2850 R.P.M.  
 These performances refer to cold water with no dissolved gases PRESSURE : 1Atm

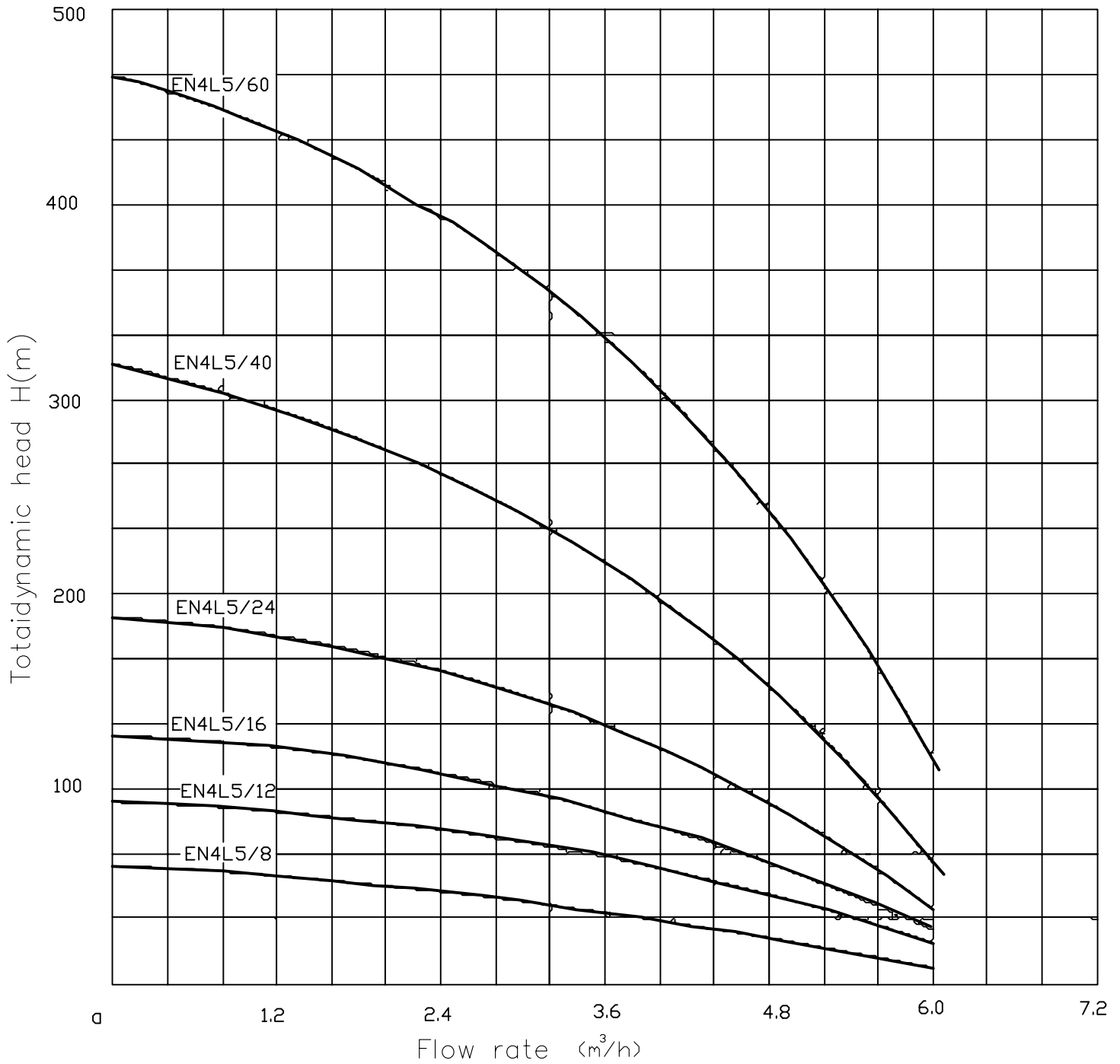
## TYPE EN4L-4

WORKING CONDITIONS  
 Water temperature up to 55°C  
 Minimum internal diameter of well:102mm

MODEL		P <sub>2</sub>		DELIVERY n ≈ 2850r/min										DN
1~ 220V-240V	3~ 380V-415V	KW	HP	Q <sup>m³/h</sup>	0	0.6	1.2	1.8	2.4	3.0	3.6	4.2	4.8	
EN4L-4-6M	EN4L-4-6	0.37	0.5	H(m)	0	10	20	30	40	50	60	70	80	1 1/4" / 1 1/2"
EN4L-4-8M	EN4L-4-8	0.55	0.75		39	37	36	34	32	29	25	21	14	1 1/4" / 1 1/2"
EN4L-4-10M	EN4L-4-10	0.75	1.0		52	52	47	45	43	39	34	27	19	1 1/4" / 1 1/2"
EN4L-4-14M	EN4L-4-14	1.1	1.5		65	65	59	56	53	48	42	34	24	1 1/4" / 1 1/2"
EN4L-4-18M	EN4L-4-18	1.5	2.0		91	86	83	79	75	68	59	48	33	1 1/4" / 1 1/2"
EN4L-4-24M	EN4L-4-24	2.2	3.0		117	110	106	102	96	87	76	62	43	1 1/4" / 1 1/2"
	EN4L-4-30	3.0	4.0		156	147	142	136	128	116	101	82	57	1 1/4" / 1 1/2"
	EN4L-4-36	3.7	5.0		195	183	177	169	160	145	127	103	71	1 1/4" / 1 1/2"
	EN4L-4-40	4.0	5.5		234	220	212	203	192	174	152	124	86	1 1/4" / 1 1/2"
	EN4L-4-50	5.5	7.5		260	244	236	226	213	193	169	137	95	1 1/4" / 1 1/2"
	EN4L-4-55	5.5	7.5		325	306	294	282	267	242	211	172	119	1 1/4" / 1 1/2"
				358	336	324	311	293	266	232	189	131	1 1/4" / 1 1/2"	



# NEMITSAS PERFORMANCE CURVES AT 50 Hz



IMPELLER MATERIAL :Stainless Steel or Plastic PPO  
 BOWL MATERIAL :Stainless Steel or Plastic PPO  
 CONDITIONS OF TESTING : TEMPERATURE : 15°C SPEED : 2850 R.P.M.  
 These performances refer to cold water with no dissolved gases PRESSURE : 1Atm

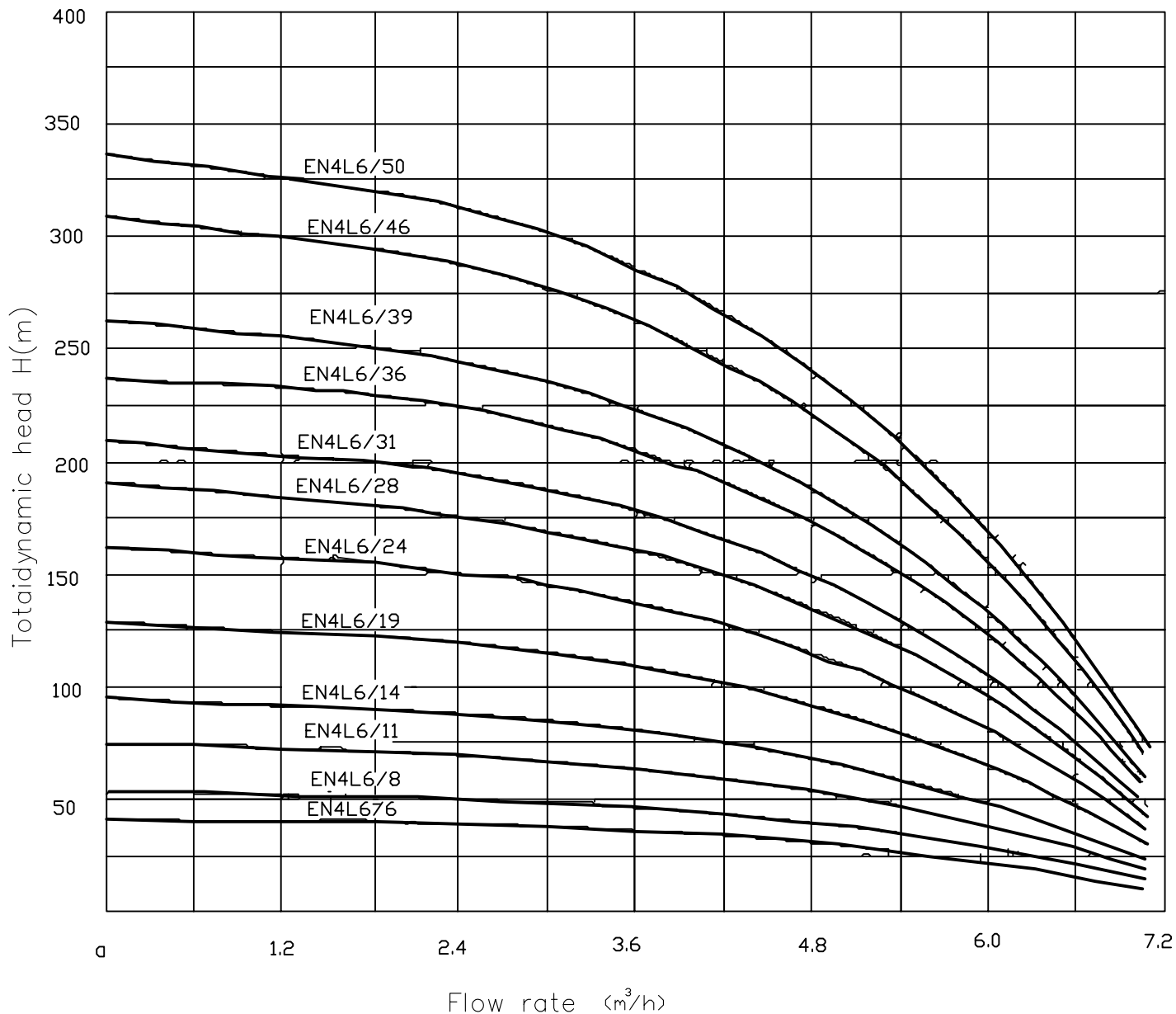
## TYPE EN4L-5

WORKING CONDITIONS  
 Water temperature up to 55°C  
 Minimum internal diameter of well:102mm

MODEL		P <sub>2</sub>		DELIVERY n ≈ 2850r/min							DN
1~ 220V-240V	3~ 380V-415V	KW	HP	Q m³/h l/min	0	1.2	2.4	3.6	4.8	6.0	
EN4L-5-8M	EN4L-5-8	0.75	1.0	H(m)	59	57	54	44	33	15	1¼"/1½"
EN4L-5-12M	EN4L-5-12	1.1	1.5		90	86	80	67	50	20	1¼"/1½"
EN4L-5-16M	EN4L-5-16	1.5	2.0		120	113	106	90	65	31	1¼"/1½"
EN4L-5-24M	EN4L-5-24	2.2	3.0		183	170	160	136	98	45	1¼"/1½"
	EN4L-5-40	3.7	5.0		318	300	267	218	150	62	1¼"/1½"
	EN4L-5-60	5.5	7.5		468	437	398	330	242	110	1¼"/1½"



# NEMITSAS PERFORMANCE CURVES AT 50 Hz

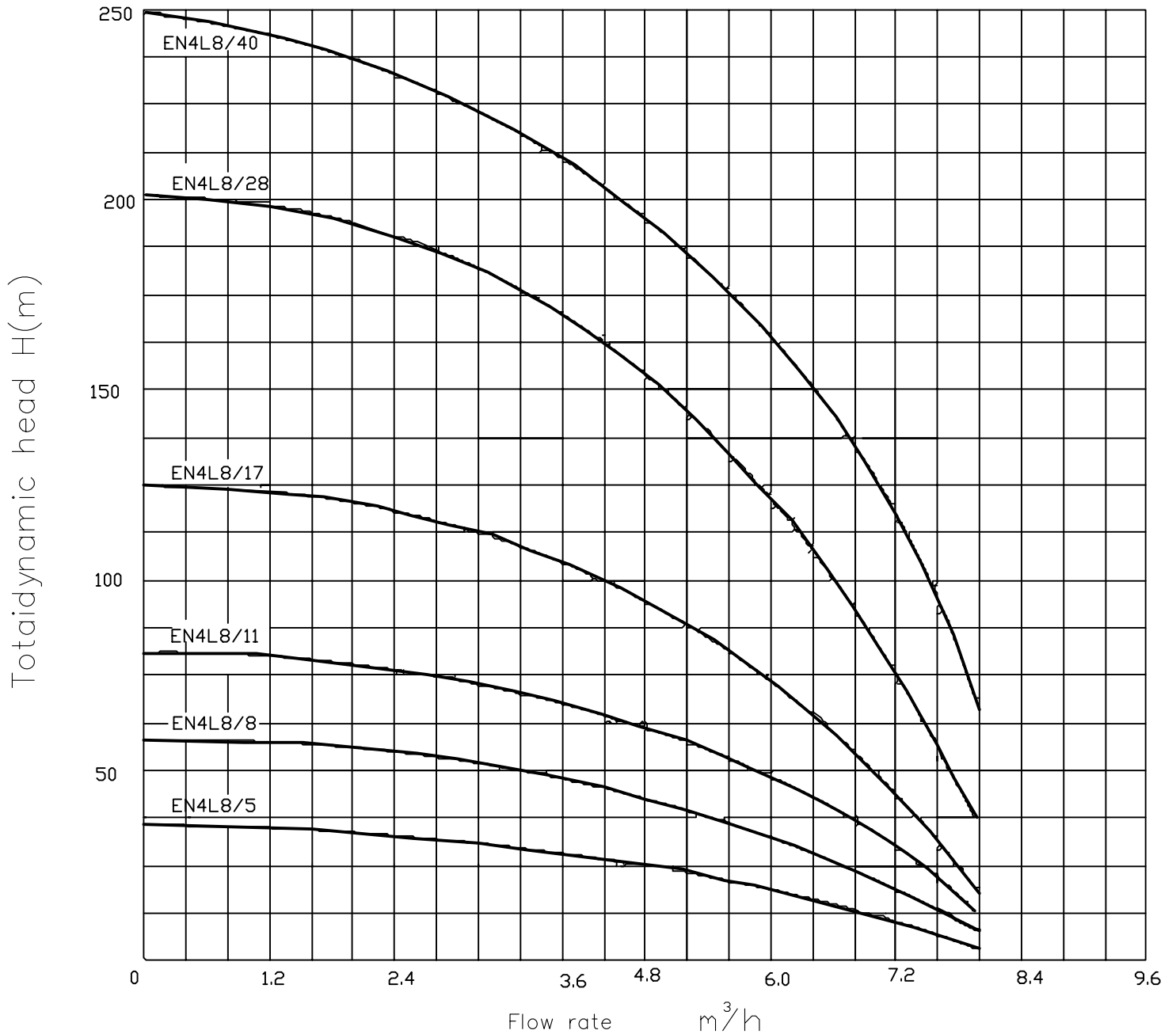


IMPELLER MATERIAL :Stainless Steel or Plastic PPO BOWL MATERIAL :Stainless Steel or Plastic PPO	<h2>TYPE EN4L-6</h2>	WORKING CONDITIONS Water temperature up to 55°C Minimum internal diameter of well:102mm
CONDITIONS OF TESTING : TEMPERATURE : 15°C      SPEED : 2850 R.P.M. <small>These performances refer to cold water with no dissolved gases</small> PRESSURE : 1Atm		

MODEL		P <sub>2</sub>		DELIVERY      n ≈ 2850r/min								DN
1~ 220V-240V	3~ 380V-415V	KW	HP	Q <sup>m³/h</sup>	0	1.2	2.4	3.6	4.8	6.0	6.6	
EN4L-6-6M	EN4L-6-6	0.55	0.75	H(m)	40	39	37	34	27	16	8	1 ¼" / 1 ½"
EN4L-6-8M	EN4L-6-8	0.75	1.0		54	52	50	45	35	21	11	1 ¼" / 1 ½"
EN4L-6-11M	EN4L-6-11	1.1	1.5		74	72	68	61	49	29	16	1 ¼" / 1 ½"
EN4L-6-14M	EN4L-6-14	1.5	2.0		94	91	87	78	62	37	20	1 ¼" / 1 ½"
EN4L-6-19M	EN4L-6-19	2.2	3.0		128	124	118	106	84	50	27	1 ¼" / 1 ½"
	EN4L-6-24	3.0	4.0		162	157	149	134	106	63	34	1 ¼" / 1 ½"
	EN4L-6-28	3.7	5.0		189	183	174	157	124	74	40	1 ¼" / 1 ½"
	EN4L-6-31	4.0	5.5		209	202	193	173	137	82	44	1 ¼" / 1 ½"
	EN4L-6-36	5.5	7.5		243	235	224	201	159	95	51	1 ¼" / 1 ½"
	EN4L-6-39	5.5	7.5		263	255	242	218	172	103	55	1 ¼" / 1 ½"
	EN4L-6-46	7.5	10.0		310	300	286	257	203	121	65	1 ¼" / 1 ½"
	EN4L-6-50	7.5	10.0		337	326	311	279	221	132	71	1 ¼" / 1 ½"



NEMITSAS PERFORMANCE CURVES AT 50 Hz



IMPELLER MATERIAL :Stainless Steel or Plastic PPO  
 BOWL MATERIAL :Stainless Steel or Plastic PPO

CONDITIONS OF TESTING : TEMPERATURE : 15°C SPEED : 2850 R.P.M.  
 These performances refer to cold water with no dissolved gases PRESSURE : 1Atm

**TYPE  
 EN4L-8**

WORKING CONDITIONS  
 Water temperature up to 55°C  
 Minimum internal diameter of well:102mm

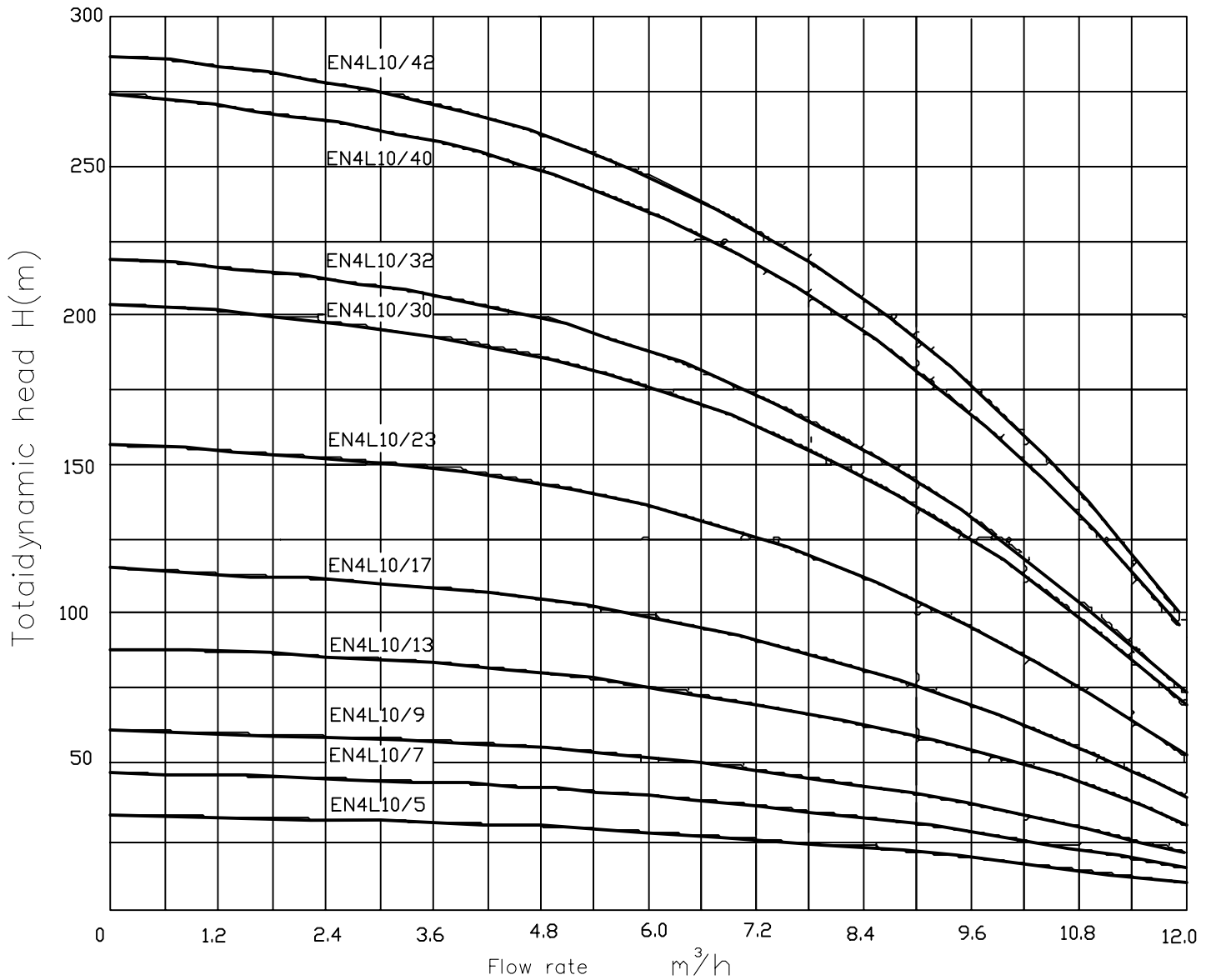
MODEL		P <sub>2</sub>		DELIVERY n ≈ 2850r/min								DN						
1~ 220V-240V	3~ 380V-415V	KW	HP	Q m³/h l/min	0	1.2	2.4	3.6	4.8	6.0	7.2		0	20	40	60	80	100
EN4L-8-5M	EN4L-8-5	0.75	1.0	H(m)	36	35	34	33	30	25	18	1¼"/1½"/2"						
EN4L-8-8M	EN4L-8-8	1.1	1.5		58	57	56	54	49	40	31	1¼"/1½"/2"						
EN4L-8-11M	EN4L-8-11	1.5	2.0		80	79	78	74	66	56	40	1¼"/1½"/2"						
EN4L-8-17M	EN4L-8-17	2.2	3.0		123	122	121	114	105	85	62	1¼"/1½"/2"						
	EN4L-8-28	3.7	5.0		203	200	195	187	167	138	101	1¼"/1½"/2"						
	EN4L-8-40	5.5	7.5		248	241	236	219	195	163	114	1¼"/1½"/2"						

MANUFACTURED BY: L.NEMITSAS LTD. LIMASSOL-CYPRUS.

Tel:+35725569225 .Fax:+35725396955. E-mail: [info@nemitsas.eu.cy](mailto:info@nemitsas.eu.cy) Web: [www.nemitsas.eu](http://www.nemitsas.eu)



NEMITSAS PERFORMANCE CURVES AT 50 Hz



IMPELLER MATERIAL :Stainless Steel or Plastic PPO  
 BOWL MATERIAL :Stainless Steel or Plastic PPO

CONDITIONS OF TESTING : TEMPERATURE : 15°C SPEED : 2850 R.P.M.  
 These performances refer to cold water with no dissolved gases PRESSURE : 1Atm

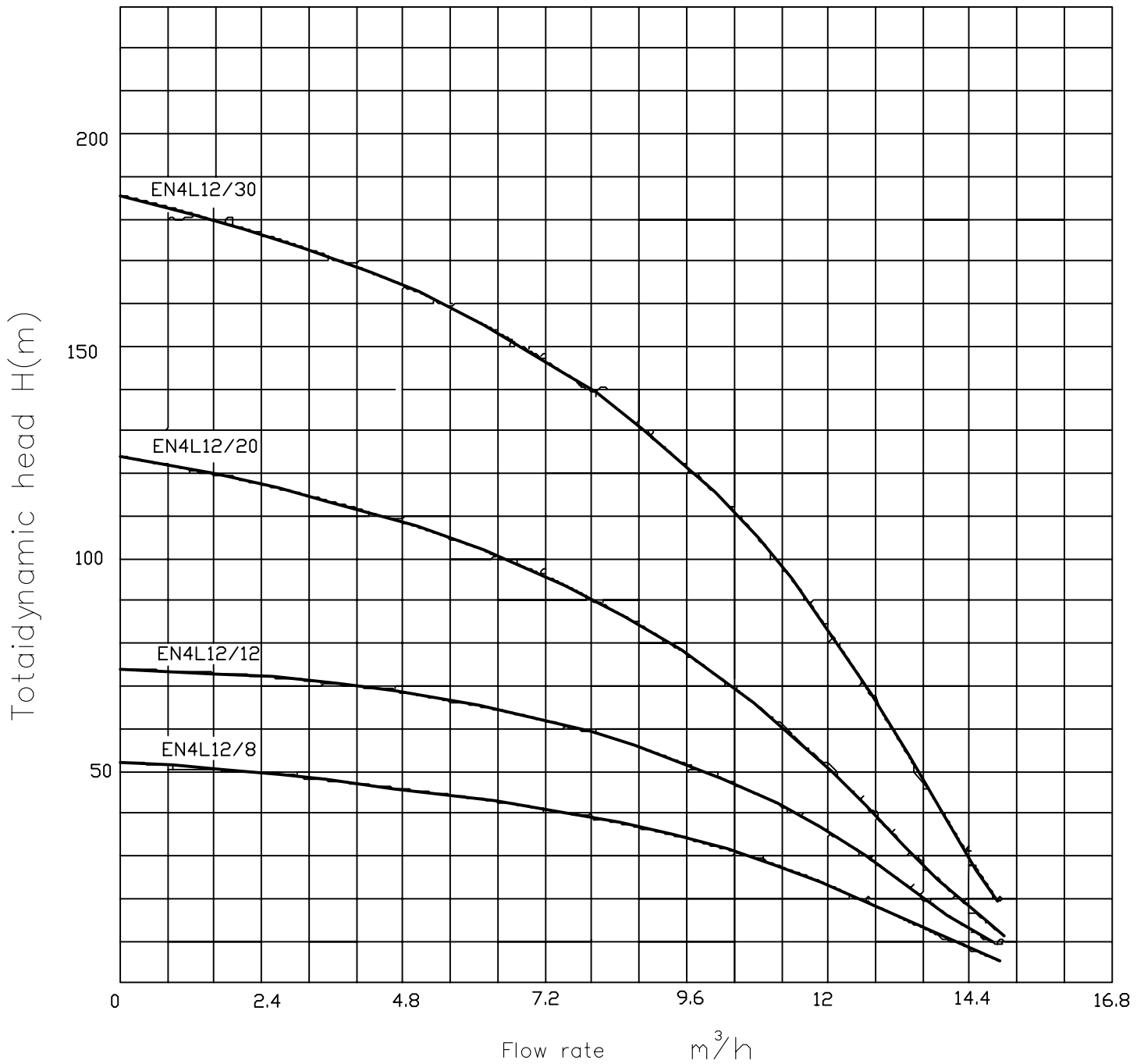
**TYPE  
 EN4L-10**

WORKING CONDITIONS  
 Water temperature up to 55C  
 Minimum internal diameter of well:102mm

MODEL		P <sub>2</sub>		DELIVERY n ≈ 2850r/min											DN
1~ 220V-240V	3~ 380V-415V	KW	HP	Q <sup>m³/h</sup> l/min	0	2.4	3.6	4.8	6.0	7.2	8.4	9.6	10.8	12	
					H(m)	0	40	60	80	100	120	140	160	180	
EN4L-10-5M	EN4L-10-5	0.75	1.0		34	33	32	31	29	27	24	21	16	11	1¼"/1½"/2"
EN4L-10-7M	EN4L-10-7	1.1	1.5		48	46	45	43	41	38	34	29	23	16	1¼"/1½"/2"
EN4L-10-9M	EN4L-10-9	1.5	2.0		61	59	58	56	53	49	44	38	30	21	1¼"/1½"/2"
EN4L-10-13M	EN4L-10-13	2.2	3.0		89	86	84	81	77	70	63	55	43	30	1¼"/1½"/2"
	EN4L-10-17	3.0	4.0		116	112	110	105	100	92	83	71	57	40	1¼"/1½"/2"
	EN4L-10-23	4.0	5.5		157	152	148	143	136	126	113	97	77	53	1¼"/1½"/2"
	EN4L-10-30	5.5	7.5		205	198	193	186	177	164	147	126	100	70	1¼"/1½"/2"
	EN4L-10-32	5.5	7.5		219	212	206	199	189	175	157	135	107	74	1¼"/1½"/2"
	EN4L-10-40	7.5	10.0		274	265	258	248	236	218	196	168	134	93	1¼"/1½"/2"
	EN4L-10-42	7.5	10.0		288	278	271	261	248	229	206	177	141	98	1¼"/1½"/2"



NEMITSAS PERFORMANCE CURVES AT 50 Hz



IMPELLER MATERIAL :Stainless Steel or Plastic PPO  
 BOWL MATERIAL :Stainless Steel or Plastic PPO

CONDITIONS OF TESTING : TEMPERATURE : 15°C SPEED : 2850 R.P.M.  
 These performances refer to cold water with no dissolved gases PRESSURE : 1Atm

**TYPE  
 EN4L-12**

WORKING CONDITIONS  
 Water temperature up to 55°C  
 Minimum internal diameter of well:102mm

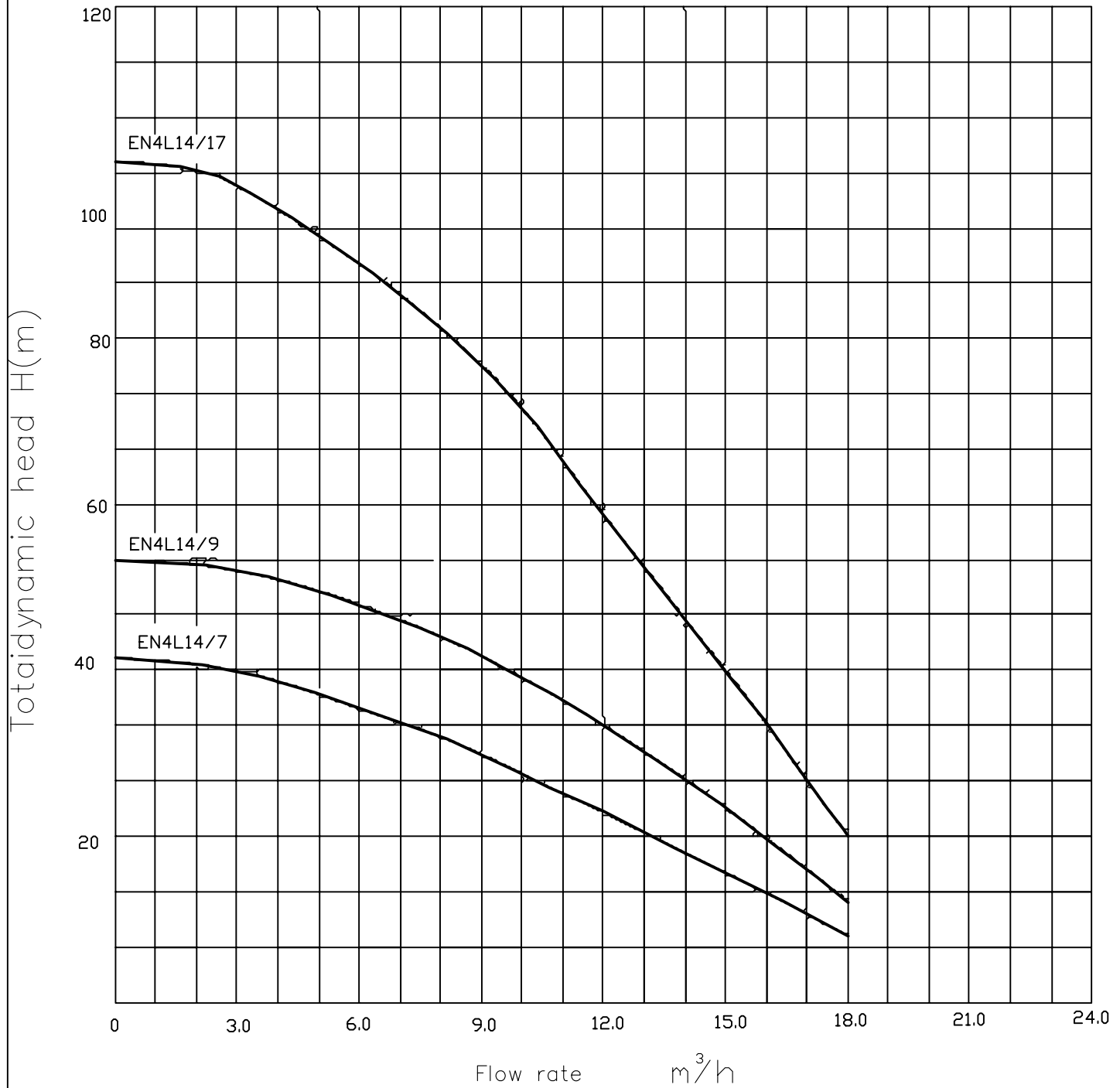
MODEL		P <sub>2</sub>		DELIVERY n ≈ 2850r/min								
1~ 220V-240V	3~ 380V-415V	KW	HP	Q m <sup>3</sup> /h l/min	0	2.4	4.8	7.2	9.0	10.2	12.0	DN
					H(m)	0	40	80	120	150	170	
EN4L-12-8M	EN4L-12-8	1.5	2.0	H(m)	53	49	45	40	37	32	23	1¼"/1½"/2"
EN4L-12-12M	EN4L-12-12	2.2	3.0		73	71	68	62	55	46	35	1¼"/1½"/2"
	EN4L-12-20	3.7	5.0		124	119	112	100	89	80	54	1¼"/1½"/2"
	EN4L-12-30	5.5	7.5		185	179	165	149	135	115	83	1¼"/1½"/2"

MANUFACTURED BY: L.NEMITSAS LTD. LIMASSOL-CYPRUS.

Tel:+35725569225 .Fax:+35725396955. E-mail: [info@nemitsas.eu.cy](mailto:info@nemitsas.eu.cy) Web: [www.nemitsas.eu](http://www.nemitsas.eu)



NEMITSAS PERFORMANCE CURVES AT 50 Hz



IMPELLER MATERIAL :Stainless Steel or Plastic PPO  
 BOWL MATERIAL :Stainless Steel or Plastic PPO

CONDITIONS OF TESTING : TEMPERATURE : 15°C SPEED : 2850 R.P.M.  
 These performances refer to cold water with no dissolved gases PRESSURE : 1Atm

**TYPE**  
**EN4L-14**

WORKING CONDITIONS  
 Water temperature up to 55C  
 Minimum internal diameter of well:102mm

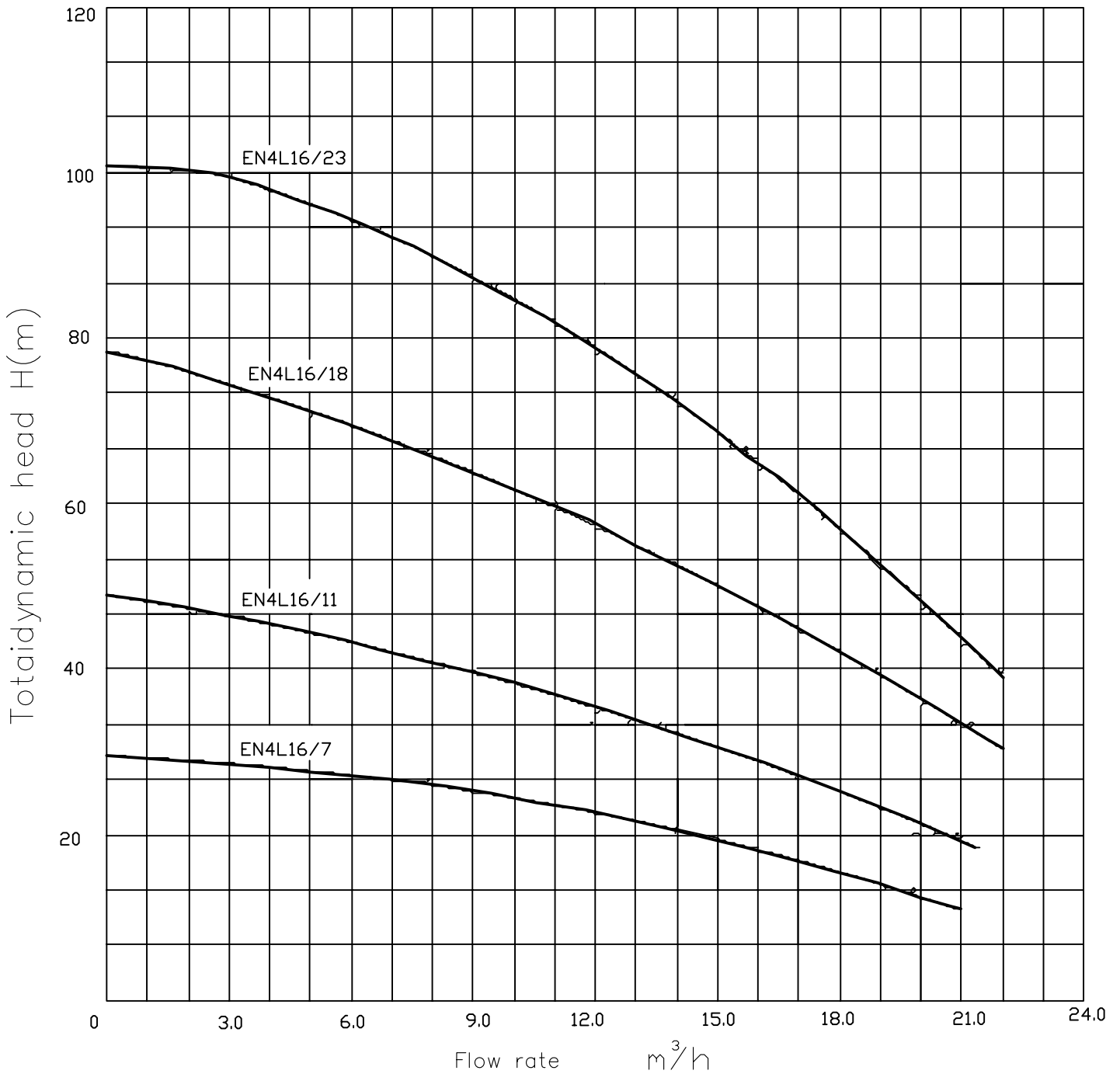
MODEL		P <sub>2</sub>		DELIVERY								DN
1~ 220V-240V	3~ 380V-415V	KW	HP	n ≈ 2850r/min								
				Q m³/h l/min	0	3.0	6.0	9.0	12.0	15.0	18.0	
EN4L-14-7M	EN4L-14-7	1.5	2.0	H(m)	42	41	35	30	24	16	8	
	EN4L-14-9	2.2	3.0		54	52	49	42	33	24	12	1¼"/1½"/2"
	EN4L-14-17	3.7	5.0		102	97	88	74	57	40	20	1¼"/1½"/2"

MANUFACTURED BY: L.NEMITSAS LTD. LIMASSOL-CYPRUS.

Tel:+35725569225 .Fax:+35725396955. E-mail: [info@nemitsas.eu.cy](mailto:info@nemitsas.eu.cy) Web: [www.nemitsas.eu](http://www.nemitsas.eu)



NEMITSAS PERFORMANCE CURVES AT 50 Hz



IMPELLER MATERIAL :Stainless Steel or Plastic PPO  
 BOWL MATERIAL :Stainless Steel or Plastic PPO

CONDITIONS OF TESTING : TEMPERATURE : 15°C SPEED : 2850 R.P.M.  
 These performances refer to cold water with no dissolved gases PRESSURE : 1Atm

**TYPE  
 EN4L-16**

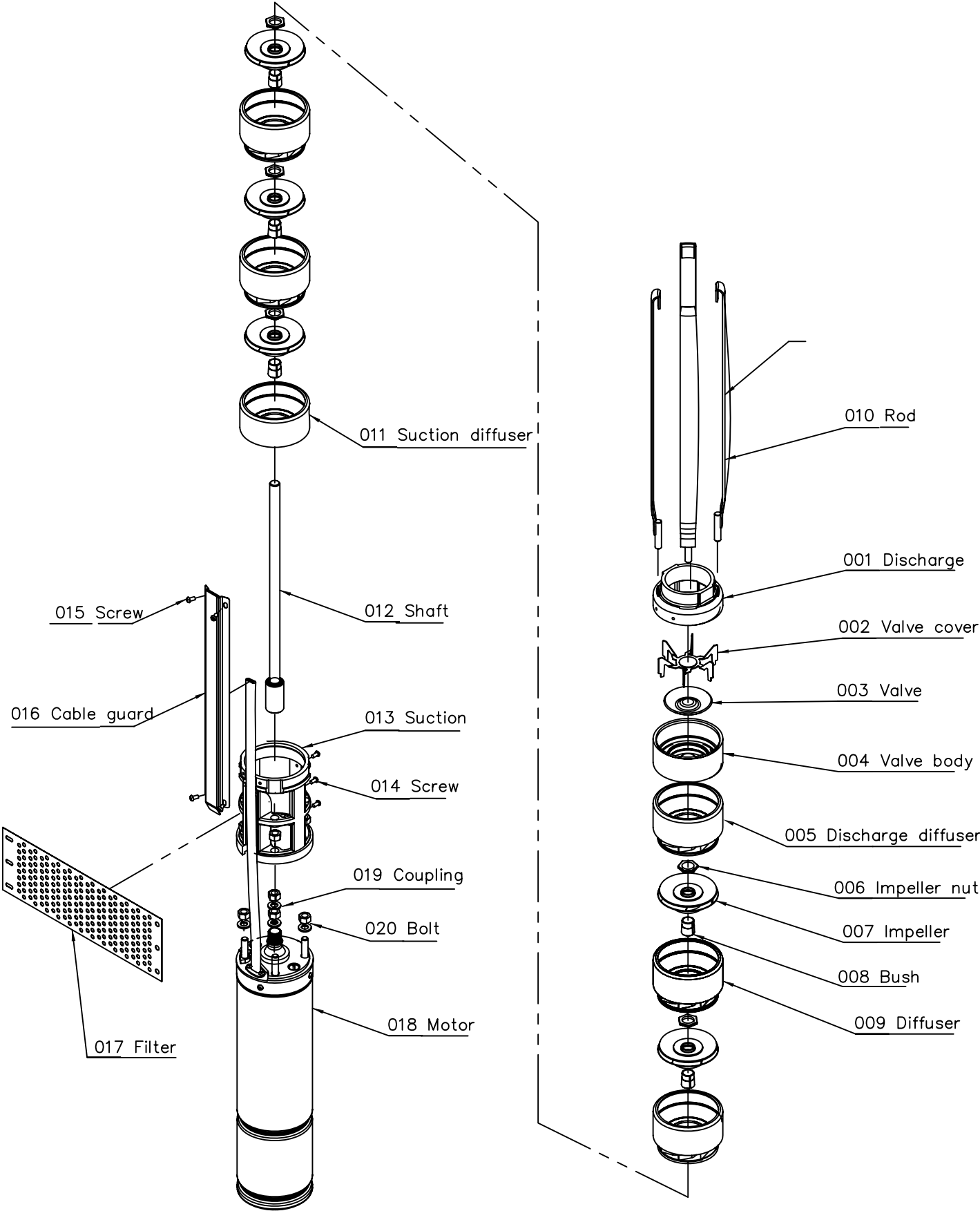
WORKING CONDITIONS  
 Water temperature up to 55C  
 Minimum internal diameter of well:102mm

MODEL		P <sub>2</sub>		DELIVERY n ≈ 2850r/min									DN
1~ 220V-240V	3~ 380V-415V	KW	HP	Q <sup>m³/h</sup> l/min	0	3.0	6.0	9.0	12.0	15.0	18.0	21.0	
EN4L-16-7M	EN4L-16-7	1.5	2.0	H(m)	29	28	27	26	23	20	15	12	1¼"/1½"/2"
EN4L-16-11M	EN4L-16-11	2.2	3.0		47	45	43	38	36	32	26	18	1¼"/1½"/2"
	EN4L-16-18	3.7	5.0		77	75	71	65	56	50	43	33	1¼"/1½"/2"
	EN4L-16-23	5.5	7.5		102	99	94	88	79	70	56	43	1¼"/1½"/2"

MANUFACTURED BY: L.NEMITSAS LTD. LIMASSOL-CYPRUS.

Tel:+35725569225 .Fax:+35725396955. E-mail: [info@nemitsas.eu.cy](mailto:info@nemitsas.eu.cy) Web: [www.nemitsas.eu](http://www.nemitsas.eu)

# 4" Parts List



# EN4S-SERIES

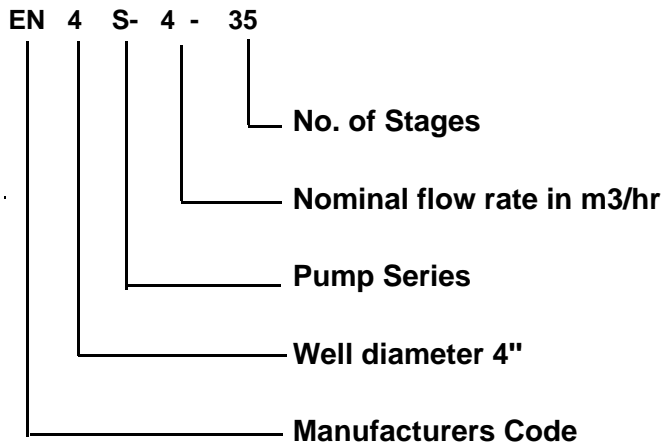


## TABLE OF MATERIALS

Name	MATERIAL	REFERENCE STANDARDS	
		EUROPE	USA
Pump external casing	Stainless Steel	EN 10088-1 - X5CrNi18-10 (1.4301)	AISI 304
Delivery casing	Stainless Steel	EN 10088-1 - X5CrNi18-10 (1.4301)	AISI 304
Suction lantern	Stainless Steel	EN 10088-1 - X5CrNi18-10 (1.4301)	AISI 304
Stage casing	Polycarbonate/Fibreglass		
Impeller	Polycarbonate/Fibreglass		
Shaft	Stainless Steel	EN 10088-1 - X5CrNi18-10 (1.4301)	AISI 304
Filter	Stainless Steel	EN 10088-1 - X5CrNi18-10 (1.4301)	AISI 304

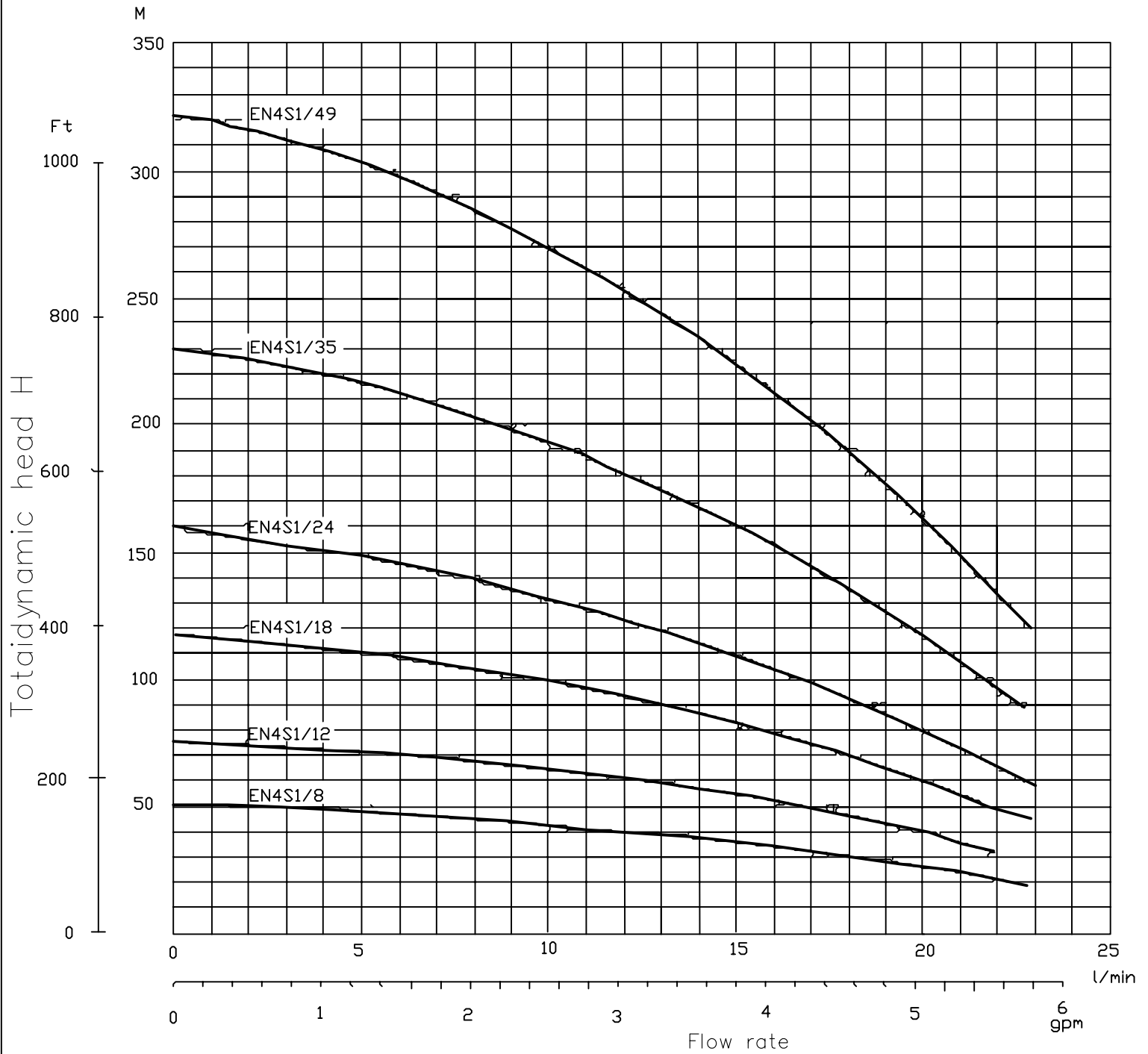
## PUMP IDENTIFICATION CODE

FOR EXAMPLE





## NEMITSAS PERFORMANCE CURVES AT 50 Hz



IMPELLER MATERIAL :Stainless Steel or Plastic PPO  
BOWL MATERIAL :Stainless Steel or Plastic PPO

CONDITIONS OF TESTING : TEMPERATURE : 15°C SPEED : 2850 R.P.M.  
These performances refer to cold water with no dissolved gases PRESSURE : 1Atm

### TYPE EN4S-1

WORKING CONDITIONS  
Water temperature up to 55C  
Minimum internal diameter of well:102mm

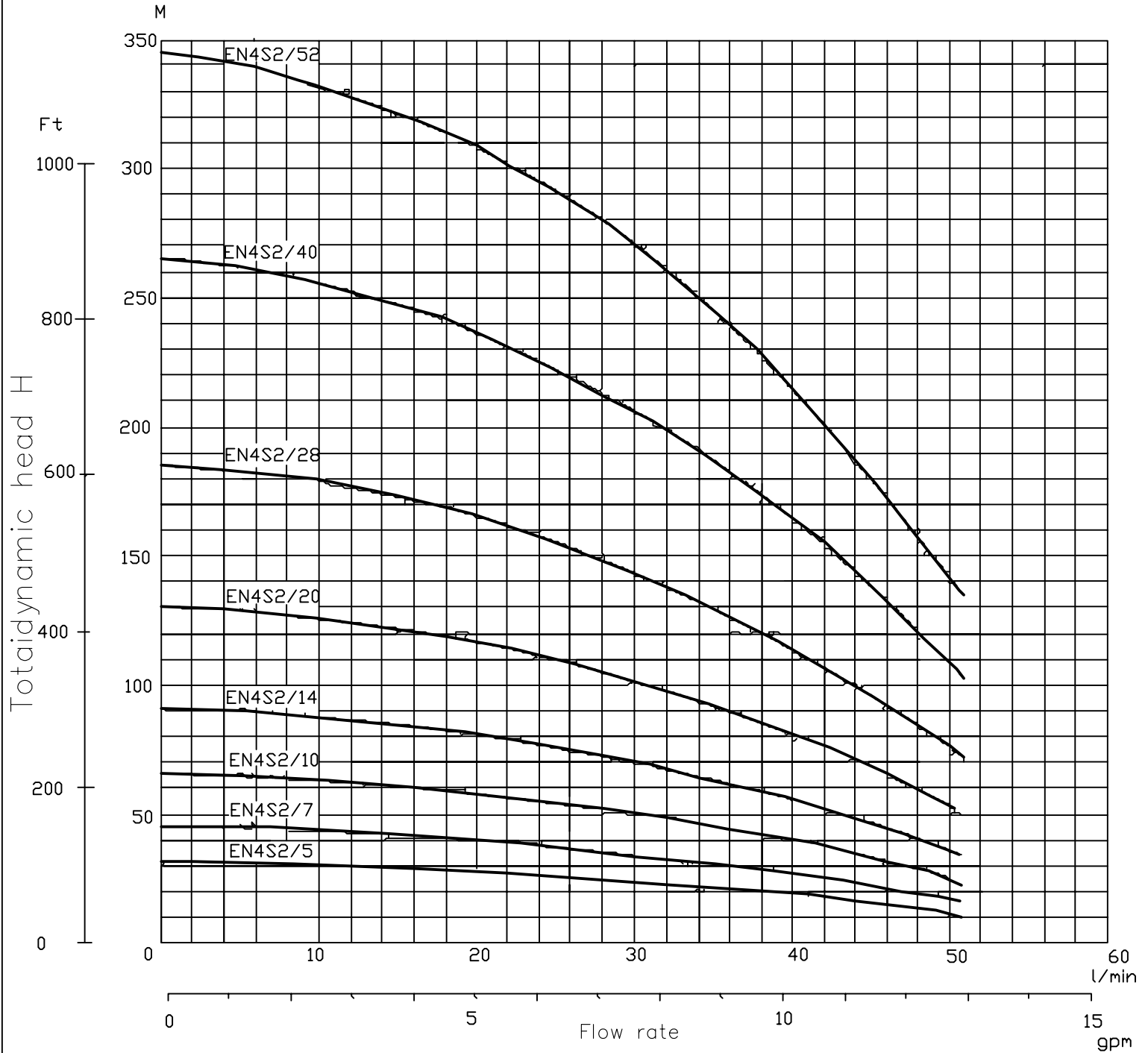
MODEL		P <sub>2</sub>		DELIVERY					DN	
1~ 220V-240V	3~ 380V-415V	KW	HP	Q m <sup>3</sup> /h l/min	n ≈ 2850r/min					
					0	0.3	0.6	0.9		1.2
EN4S-1-8M	EN4S-1-8	0.25	0.33	51	48	43	36	26	1¼"/1½"/2"	
EN4S-1-12M	EN4S-1-12	0.37	0.5	75	72	64	55	40	1¼"/1½"/2"	
EN4S-1-18M	EN4S-1-18	0.55	0.75	117	110	99	82	60	1¼"/1½"/2"	
EN4S-1-24M	EN4S-1-24	0.75	1.0	157	148	130	110	80	1¼"/1½"/2"	
EN4S-1-35M	EN4S-1-35	1.1	1.5	230	217	192	160	116	1¼"/1½"/2"	
EN4S-1-49M	EN4S-1-49	1.5	2.0	322	303	270	224	161	1¼"/1½"/2"	

MANUFACTURED BY: L.NEMITSAS LTD. LIMASSOL-CYPRUS.

Tel: +35725569225 .Fax: +35725396955. E-mail: [info@nemitsas.eu.cy](mailto:info@nemitsas.eu.cy) Web: [www.nemitsas.eu](http://www.nemitsas.eu)



NEMITSAS PERFORMANCE CURVES AT 50 Hz



IMPELLER MATERIAL :Stainless Steel or Plastic PPO  
 BOWL MATERIAL :Stainless Steel or Plastic PPO

CONDITIONS OF TESTING : TEMPERATURE : 15°C SPEED : 2850 R.P.M.  
 These performances refer to cold water with no dissolved gases PRESSURE : 1Atm

**TYPE  
 EN4S-2**

WORKING CONDITIONS  
 Water temperature up to 55°C  
 Minimum internal diameter of well:102mm

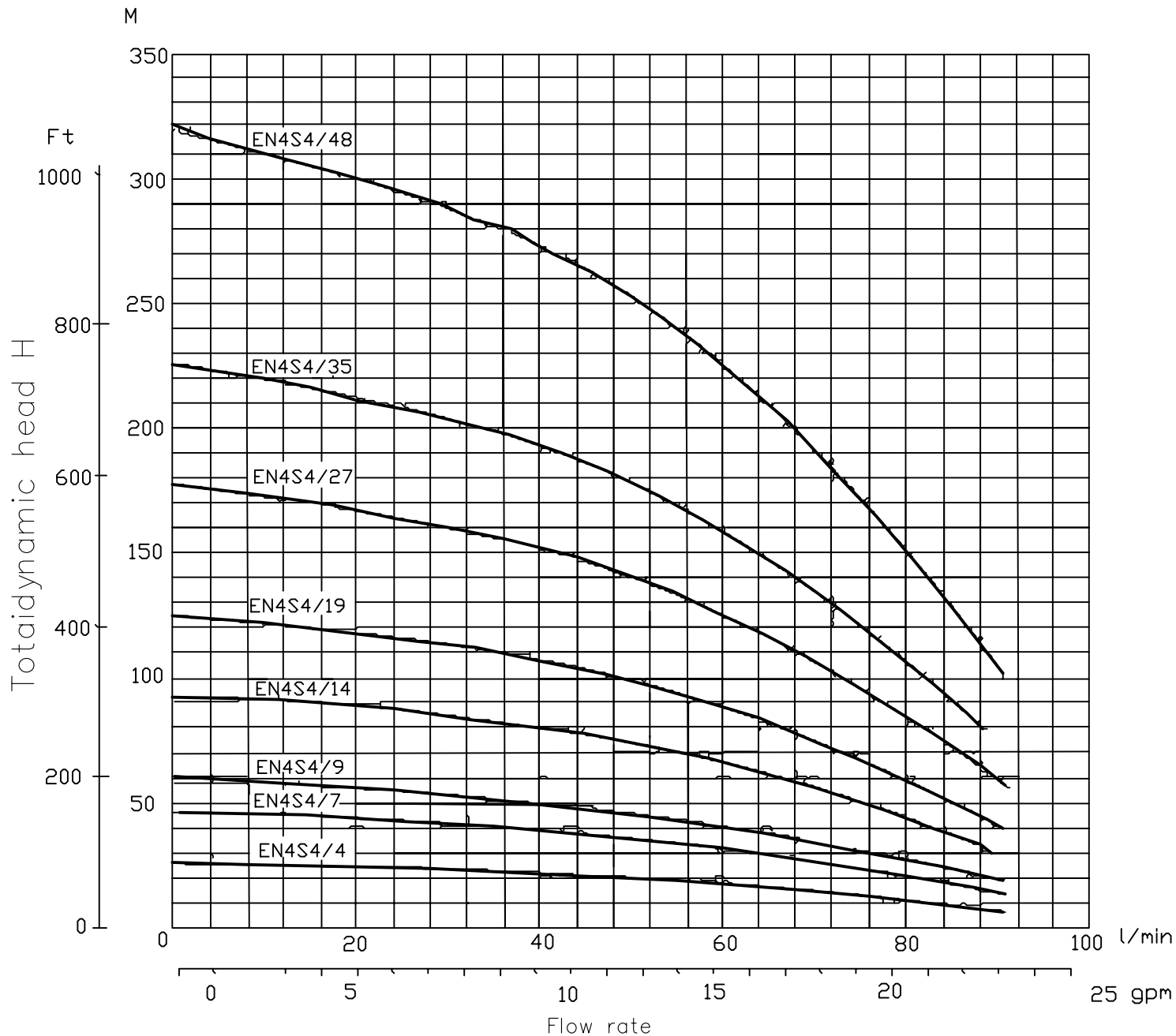
MODEL		P <sub>2</sub>		DELIVERY						DN	
1~ 220V-240V	3~ 380V-415V	KW	HP	Q m <sup>3</sup> /h l/min	n ≈ 2850r/min						
					0	0.6	1.2	1.8	2.4		3.0
EN4S-2-5M	EN4S-2-5	0.25	0.33	31	30	28	24	19	12	1¼"/1½"/2"	
EN4S-2-7M	EN4S-2-7	0.37	0.5	46	42	40	34	27	17	1¼"/1½"/2"	
EN4S-2-10M	EN4S-2-10	0.55	0.75	65	63	58	50	40	25	1¼"/1½"/2"	
EN4S-2-14M	EN4S-2-14	0.75	1.0	91	87	80	70	55	35	1¼"/1½"/2"	
EN4S-2-20M	EN4S-2-20	1.1	1.5	130	125	116	101	80	52	1¼"/1½"/2"	
EN4S-2-28M	EN4S-2-28	1.5	2.0	185	178	165	142	113	74	1¼"/1½"/2"	
EN4S-2-40M	EN4S-2-40	2.2	3.0	265	255	235	206	163	108	1¼"/1½"/2"	
	EN4S-2-52	3.0	4.0	345	331	308	271	213	140	1¼"/1½"/2"	

MANUFACTURED BY: L.NEMITSAS LTD. LIMASSOL-CYPRUS.

Tel:+35725569225 .Fax:+35725396955. E-mail: [info@nemitsas.eu.cy](mailto:info@nemitsas.eu.cy) Web: [www.nemitsas.eu](http://www.nemitsas.eu)



NEMITSAS PERFORMANCE CURVES AT 50 Hz



IMPELLER MATERIAL :Stainless Steel or Plastic PPO  
 BOWL MATERIAL :Stainless Steel or Plastic PPO

CONDITIONS OF TESTING : TEMPERATURE : 15°C SPEED : 2850 R.P.M.  
 These performances refer to cold water with no dissolved gases PRESSURE : 1Atm

**TYPE  
 EN4S-4**

WORKING CONDITIONS  
 Water temperature up to 55C  
 Minimum internal diameter of well:102mm

MODEL		P <sub>2</sub>		DELIVERY							DN	
1~ 220V-240V	3~ 380V-415V	KW	HP	n ≈ 2850r/min								
				Q <sup>m³/h</sup> l/min	0	1.8	2.4	3.0	3.6	4.8	5.4	H(m)
EN4S-4-4M	EN4S-4-4	0.37	0.5	0	0	30	40	50	60	80	90	
EN4S-4-7M	EN4S-4-7	0.55	0.75	26	23	42	40	36	32	21	14	1¼"/1½"/2"
EN4S-4-9M	EN4S-4-9	0.75	1.0	46	53	50	50	46	40	27	19	1¼"/1½"/2"
EN4S-4-14M	EN4S-4-14	1.1	1.5	57	84	80	80	74	66	44	29	1¼"/1½"/2"
EN4S-4-19M	EN4S-4-19	1.5	2.0	92	113	107	107	98	88	60	40	1¼"/1½"/2"
EN4S-4-27M	EN4S-4-27	2.2	3.0	125	160	151	151	140	125	83	57	1¼"/1½"/2"
	EN4S-4-35	3.0	4.0	178	204	193	193	177	160	105	72	1¼"/1½"/2"
	EN4S-4-48	4.0	5.5	226	286	273	273	252	225	150	102	1¼"/1½"/2"

MANUFACTURED BY: L.NEMITSAS LTD. LIMASSOL-CYPRUS.

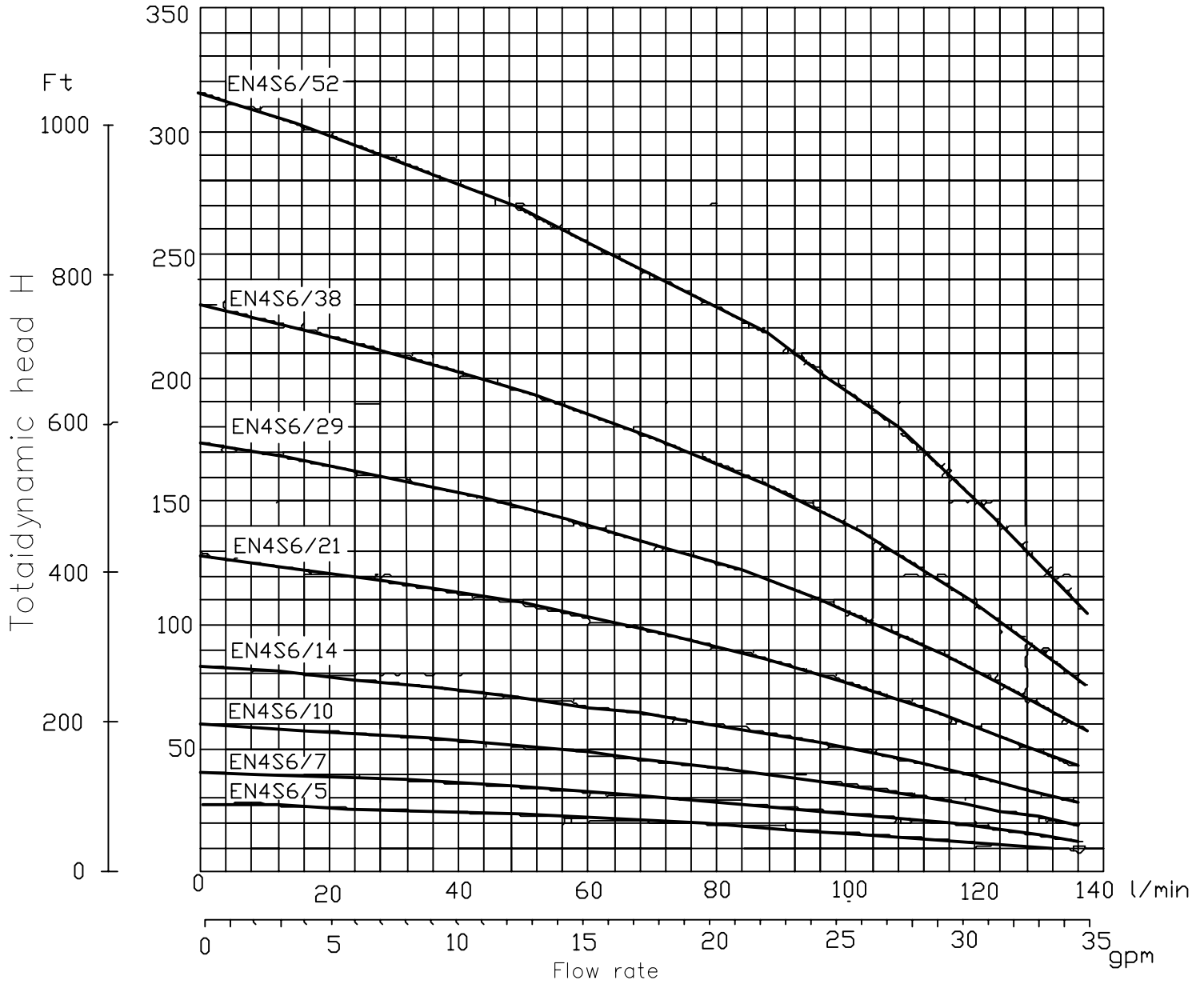
Tel:+35725569225 .Fax:+35725396955. E-mail: [info@nemitsas.eu.cy](mailto:info@nemitsas.eu.cy) Web: [www.nemitsas.eu](http://www.nemitsas.eu)



NEMITSAS PERFORMANCE CURVES AT 50 Hz



M



IMPELLER MATERIAL :Stainless Steel or Plastic PPO  
BOWL MATERIAL :Stainless Steel or Plastic PPO

CONDITIONS OF TESTING : TEMPERATURE : 15°C SPEED : 2850 R.P.M.  
These performances refer to cold water with no dissolved gases PRESSURE : 1Atm

**TYPE  
EN4S-6**

WORKING CONDITIONS  
Water temperature up to 55°C  
Minimum internal diameter of well:102mm

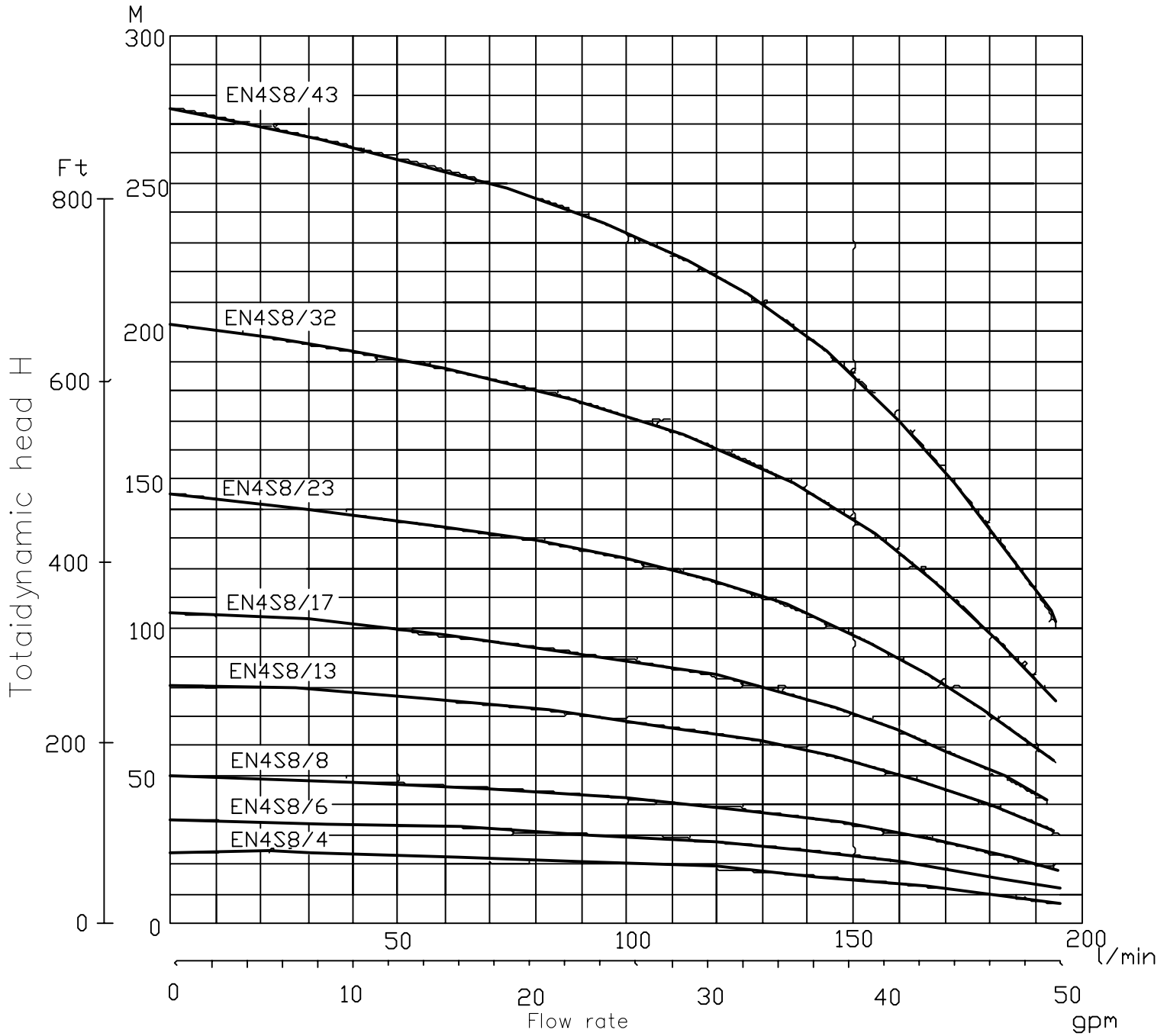
MODEL		P <sub>2</sub>		DELIVERY								DN	
1~ 220V-240V	3~ 380V-415V	KW	HP	Q <sup>m³/h</sup> l/min	n ≈ 2850r/min								
					0	3.0	3.6	4.8	5.4	6.0	7.2		120
EN4S-6-5M	EN4S-6-5	0.55	0.75	28	23	22	20	18	16	12	1 ¼" / 1 ½" / 2"		
EN4S-6-7M	EN4S-6-7	0.75	1.0	41	34	32	29	27	25	19	1 ¼" / 1 ½" / 2"		
EN4S-6-10M	EN4S-6-10	1.1	1.5	59	50	48	42	39	37	27	1 ¼" / 1 ½" / 2"		
EN4S-6-14M	EN4S-6-14	1.5	2.0	83	71	67	60	56	51	38	1 ¼" / 1 ½" / 2"		
EN4S-6-21M	EN4S-6-21	2.2	3.0	127	107	102	91	84	78	59	1 ¼" / 1 ½" / 2"		
	EN4S-6-29	3.0	4.0	174	147	140	125	116	106	81	1 ¼" / 1 ½" / 2"		
	EN4S-6-38	4.0	5.5	230	194	185	165	154	140	109	1 ¼" / 1 ½" / 2"		
	EN4S-6-52	5.5	7.5	315	266	254	229	213	195	150	1 ¼" / 1 ½" / 2"		

MANUFACTURED BY: L.NEMITSAS LTD. LIMASSOL-CYPRUS.

Tel:+35725569225 .Fax:+35725396955. E-mail: [info@nemitsas.eu.cy](mailto:info@nemitsas.eu.cy) Web: [www.nemitsas.eu](http://www.nemitsas.eu)



NEMITSAS PERFORMANCE CURVES AT 50 Hz



IMPELLER MATERIAL :Stainless Steel or Plastic PPO  
BOWL MATERIAL :Stainless Steel or Plastic PPO

CONDITIONS OF TESTING : TEMPERATURE : 15°C SPEED : 2850 R.P.M.  
These performances refer to cold water with no dissolved gases PRESSURE : 1Atm

**TYPE  
EN4S-8**

WORKING CONDITIONS  
Water temperature up to 55°C  
Minimum internal diameter of well:102mm

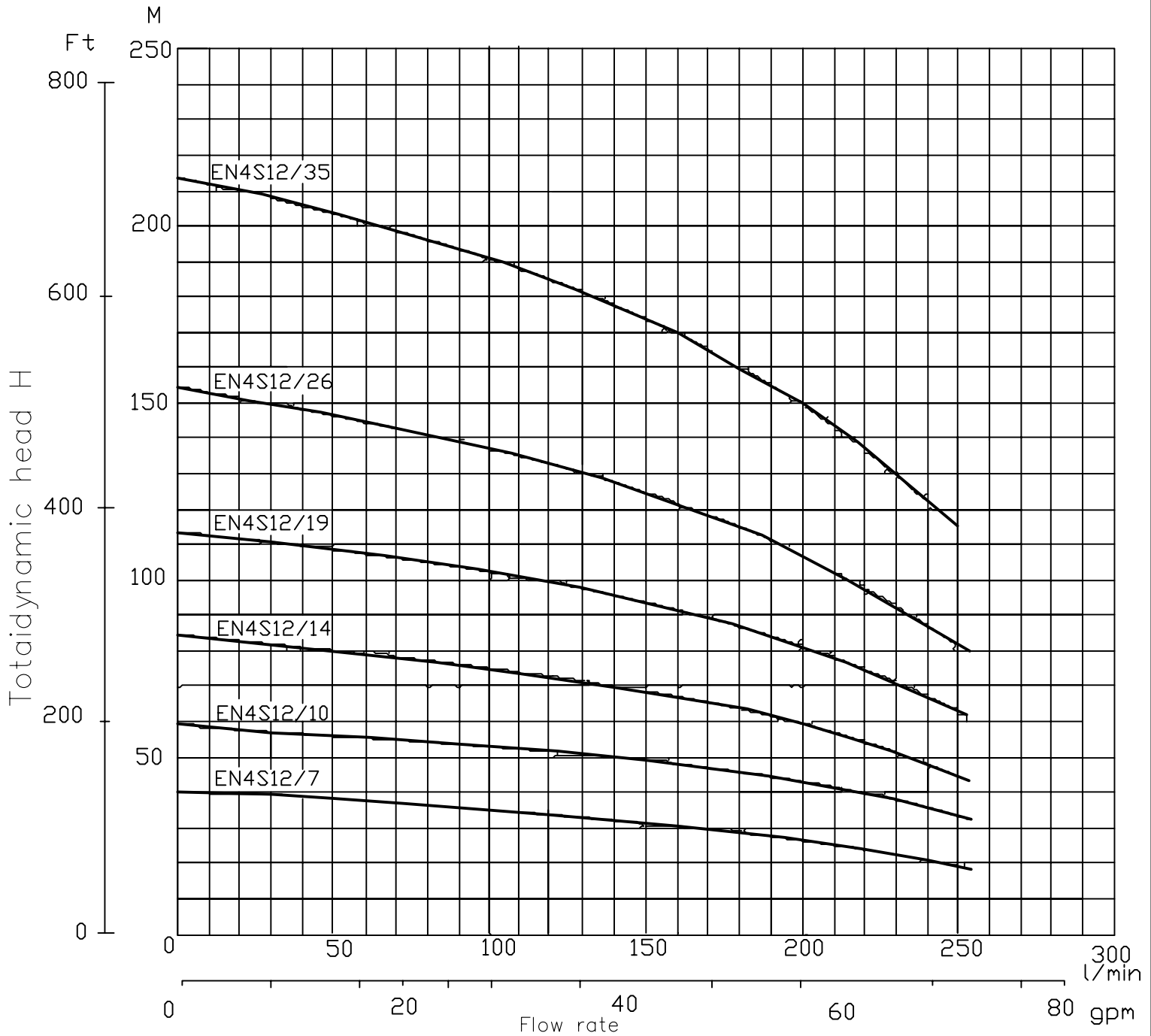
MODEL		P <sub>2</sub>		DELIVERY										DN
1~ 220V-240V	3~ 380V-415V	KW	HP	n ≈ 2850r/min										
				Q <sup>m³/h</sup> l/min	0	3.6	4.8	5.4	6.0	7.2	8.4	9.6		
EN4S-8-4M	EN4S-8-4	0.75	1.0	H(m)	0	60	80	90	100	120	140	160	1 ¼" / 1 ½" / 2"	
EN4S-8-6M	EN4S-8-6	1.1	1.5		24	22	21	21	20	18	16	14	1 ¼" / 1 ½" / 2"	
EN4S-8-8M	EN4S-8-8	1.5	2.0		36	33	32	31	30	28	25	21	1 ¼" / 1 ½" / 2"	
EN4S-8-13M	EN4S-8-13	2.2	3.0		49	47	45	44	42	39	36	31	1 ¼" / 1 ½" / 2"	
	EN4S-8-17	3.0	4.0		80	75	72	70	68	64	58	50	1 ¼" / 1 ½" / 2"	
	EN4S-8-23	4.0	5.5		105	97	94	91	89	83	75	64	1 ¼" / 1 ½" / 2"	
	EN4S-8-32	5.5	7.5		145	134	129	126	123	115	103	89	1 ¼" / 1 ½" / 2"	
	EN4S-8-43	7.5	10.0		202	188	180	176	171	161	146	125	1 ¼" / 1 ½" / 2"	
				275	254	245	239	233	219	197	170	1 ¼" / 1 ½" / 2"		

MANUFACTURED BY: L.NEMITSAS LTD. LIMASSOL-CYPRUS.

Tel:+35725569225 .Fax:+35725396955. E-mail: [info@nemitsas.eu.cy](mailto:info@nemitsas.eu.cy) Web: [www.nemitsas.eu](http://www.nemitsas.eu)



NEMITSAS PERFORMANCE CURVES AT 50 Hz



IMPELLER MATERIAL :Stainless Steel or Plastic PPO  
 BOWL MATERIAL :Stainless Steel or Plastic PPO

CONDITIONS OF TESTING : TEMPERATURE : 15°C SPEED : 2850 R.P.M.  
 These performances refer to cold water with no dissolved gases PRESSURE : 1Atm

**TYPE  
EN4S-12**

WORKING CONDITIONS  
 Water temperature up to 55°C  
 Minimum internal diameter of well:102mm

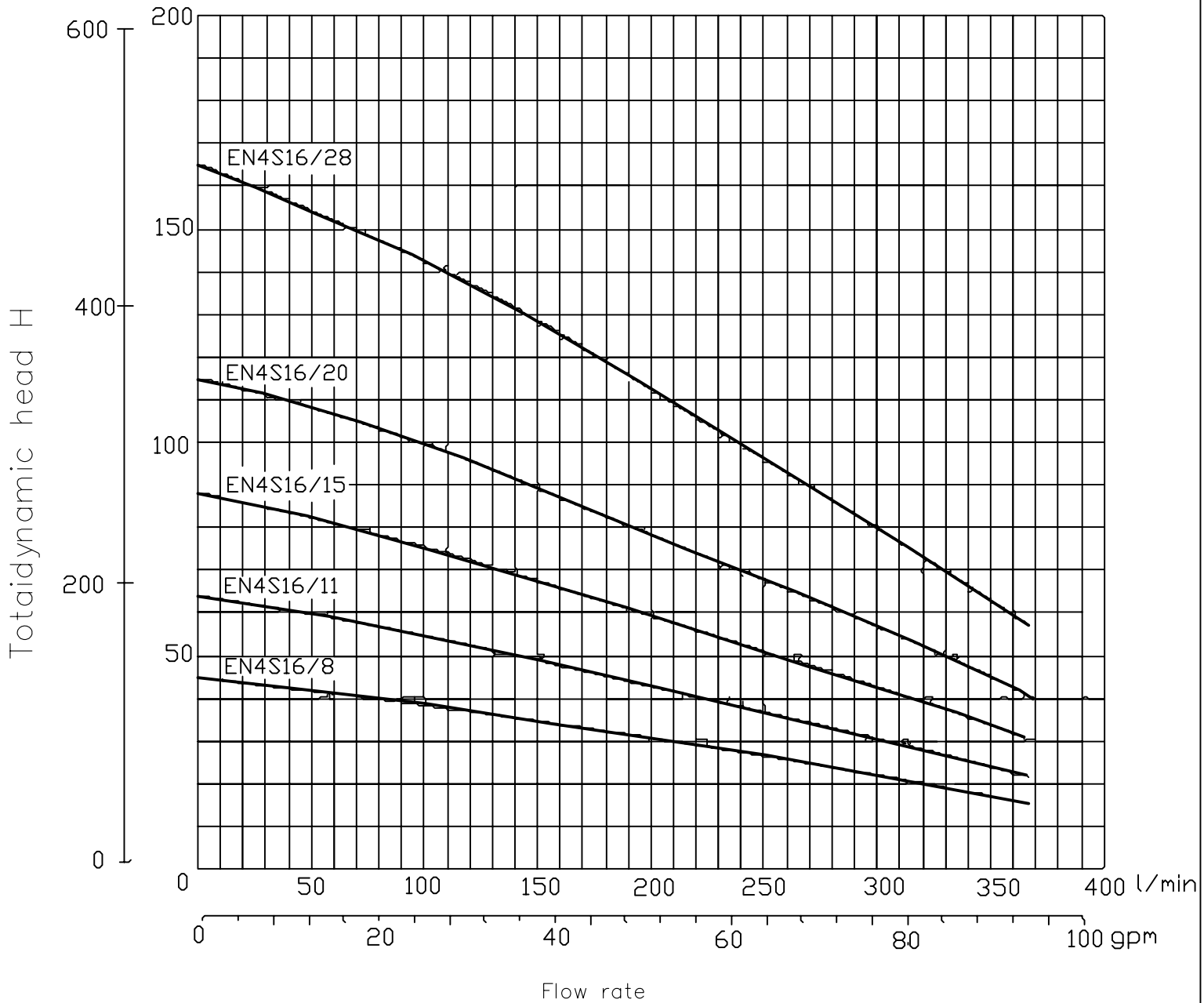
MODEL		P <sub>2</sub>		DELIVERY							DN		
1~ 220V-240V	3~ 380V-415V	KW	HP	n ≈ 2850r/min									
				Q <sup>m³/h</sup> l/min	0	6.0	7.2	8.4	9.6	12.0	15.0		
EN4S-12-7M	EN4S-12-7	1.5	2.0	H(m)	0	100	120	140	160	200	250	1¼"/1½"/2"	
EN4S-12-10M	EN4S-12-10	2.2	3.0		40	34	33	31	29	25	17	1¼"/1½"/2"	
	EN4S-12-14	3.0	4.0		59	51	48	46	43	36	25	1¼"/1½"/2"	
	EN4S-12-19	4.0	5.5		84	73	69	66	61	50	33	1¼"/1½"/2"	
	EN4S-12-26	5.5	7.5		114	98	93	88	82	67	46	1¼"/1½"/2"	
	EN4S-12-35	7.5	10.0		156	134	127	120	112	93	65	1¼"/1½"/2"	
					215	185	175	164	152	126	85	1¼"/1½"/2"	

MANUFACTURED BY: L.NEMITSAS LTD. LIMASSOL-CYPRUS.

Tel:+35725569225 .Fax:+35725396955. E-mail: [info@nemitsas.eu.cy](mailto:info@nemitsas.eu.cy) Web: [www.nemitsas.eu](http://www.nemitsas.eu)



NEMITSAS PERFORMANCE CURVES AT 50 Hz



IMPELLER MATERIAL :Stainless Steel or Plastic PPO  
 BOWL MATERIAL :Stainless Steel or Plastic PPO

CONDITIONS OF TESTING : TEMPERATURE : 15°C SPEED : 2850 R.P.M.  
 These performances refer to cold water with no dissolved gases PRESSURE : 1Atm

**TYPE  
 EN4S-16**

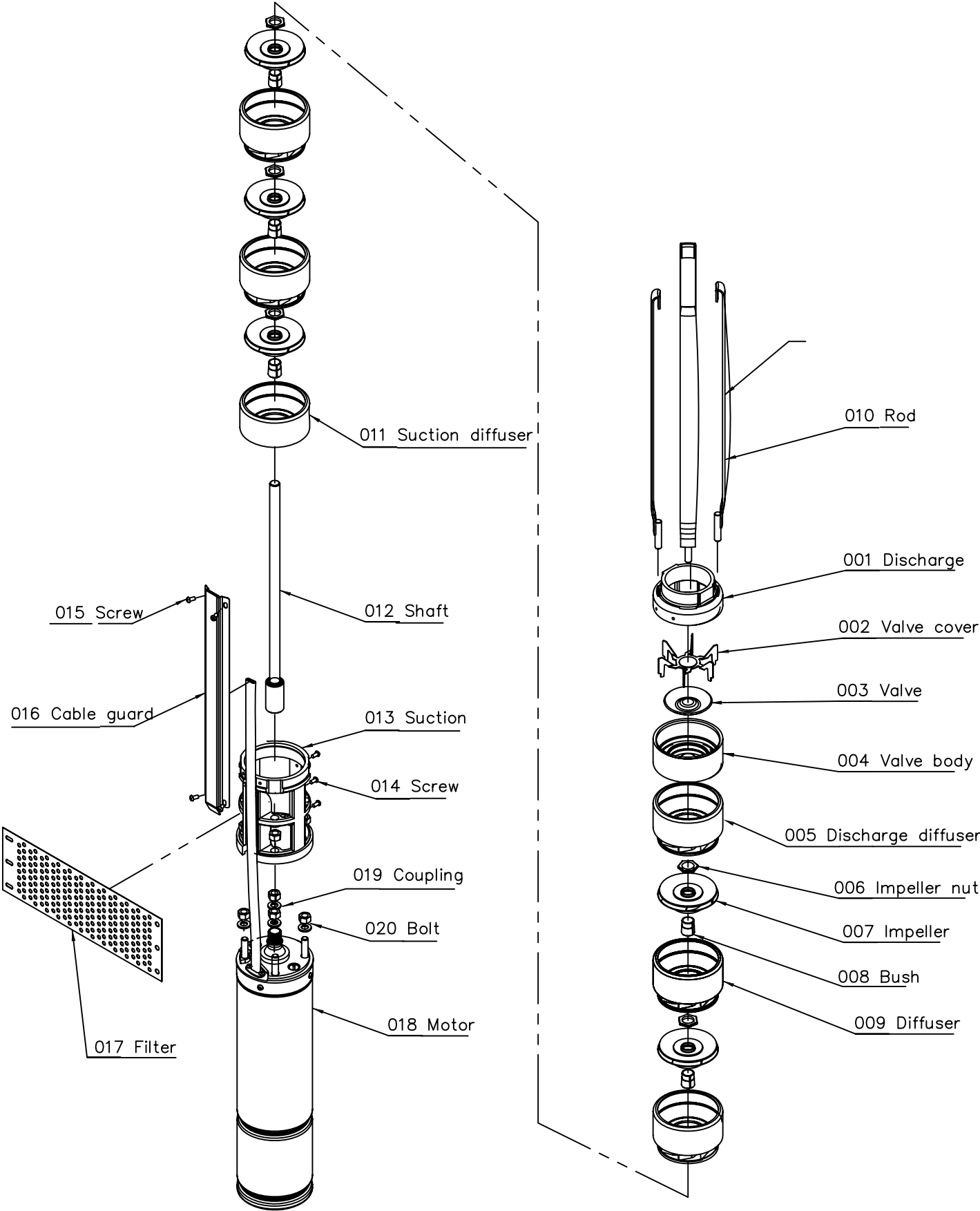
WORKING CONDITIONS  
 Water temperature up to 55°C  
 Minimum internal diameter of well:102mm

MODEL		P <sub>2</sub>		DELIVERY							DN	
1~ 220V-240V	3~ 380V-415V	KW	HP	n ≈ 2850r/min								
				Q <sup>m³/h</sup> l/min	0	8.4	9.6	12.0	15.0	18.0	21.0	1¼"/1½"/2"
EN4S-16-8M	EN4S-16-8	2.2	3.0	H(m)	0	140	160	200	250	300	350	
	EN4S-16-11	3.0	4.0		45	36	34	31	27	22	17	
	EN4S-16-15	4.0	5.5		63	51	48	43	37	31	23	
	EN4S-16-20	5.5	7.5		87	69	66	59	51	43	33	
	EN4S-16-28	7.5	10.0		116	92	87	78	67	56	44	
					163	131	125	112	96	80	63	

MANUFACTURED BY: L.NEMITSAS LTD. LIMASSOL-CYPRUS.

Tel:+35725569225 .Fax:+35725396955. E-mail: [info@nemitsas.eu.cy](mailto:info@nemitsas.eu.cy) Web: [www.nemitsas.eu](http://www.nemitsas.eu)

# 4" Parts List



# EN4P-SERIES

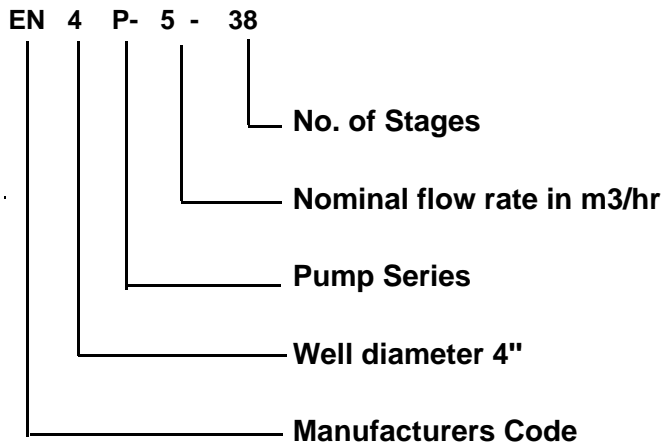


## TABLE OF MATERIALS

Name	MATERIAL	REFERENCE STANDARDS	
		EUROPE	USA
Pump external casing	Stainless Steel	EN 10088-1 - X5CrNi18-10 (1.4301)	AISI 304
Delivery casing	Stainless Steel	EN 10088-1 - X5CrNi18-10 (1.4301)	AISI 304
Suction lantern	Stainless Steel	EN 10088-1 - X5CrNi18-10 (1.4301)	AISI 304
Stage casing	Stainless Steel	EN 10088-1 - X5CrNi18-10 (1.4301)	AISI 304
Impeller	Stainless Steel	EN 10088-1 - X5CrNi18-10 (1.4301)	AISI 304
Shaft	Stainless Steel	EN 10088-1 - X5CrNi18-10 (1.4301)	AISI 304
Filter	Stainless Steel	EN 10088-1 - X5CrNi18-10 (1.4301)	AISI 304

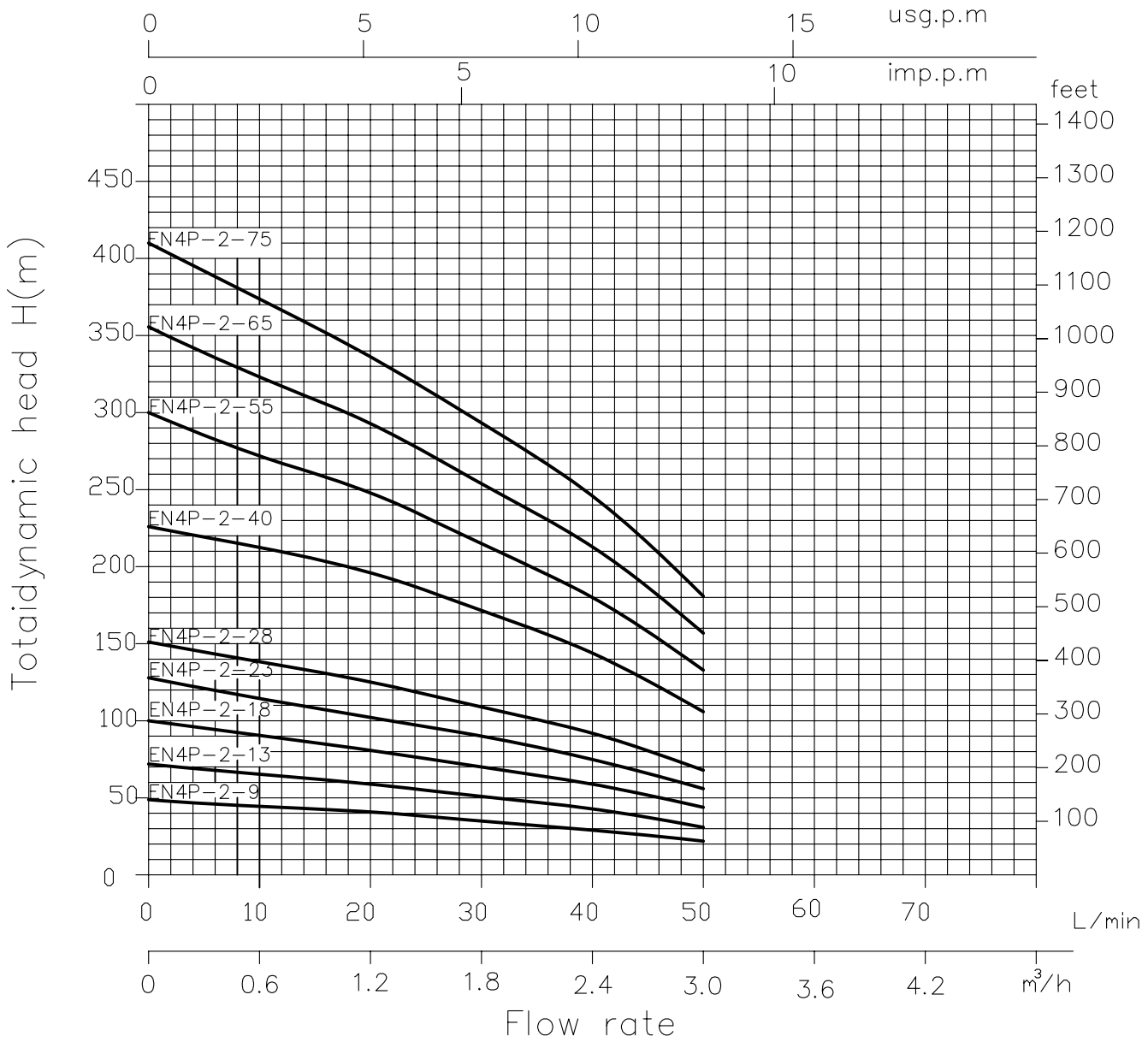
## PUMP IDENTIFICATION CODE

FOR EXAMPLE





NEMITSAS PERFORMANCE CURVES AT 50 Hz



IMPELLER MATERIAL :Stainless Steel or Plastic PPO  
 BOWL MATERIAL :Stainless Steel or Plastic PPO

CONDITIONS OF TESTING : TEMPERATURE : 15°C SPEED : 2850 R.P.M.  
 These performances refer to cold water with no dissolved gases PRESSURE : 1Atm

**TYPE  
 EN4P-2**

WORKING CONDITIONS  
 Water temperature up to 55°C  
 Minimum internal diameter of well:102mm

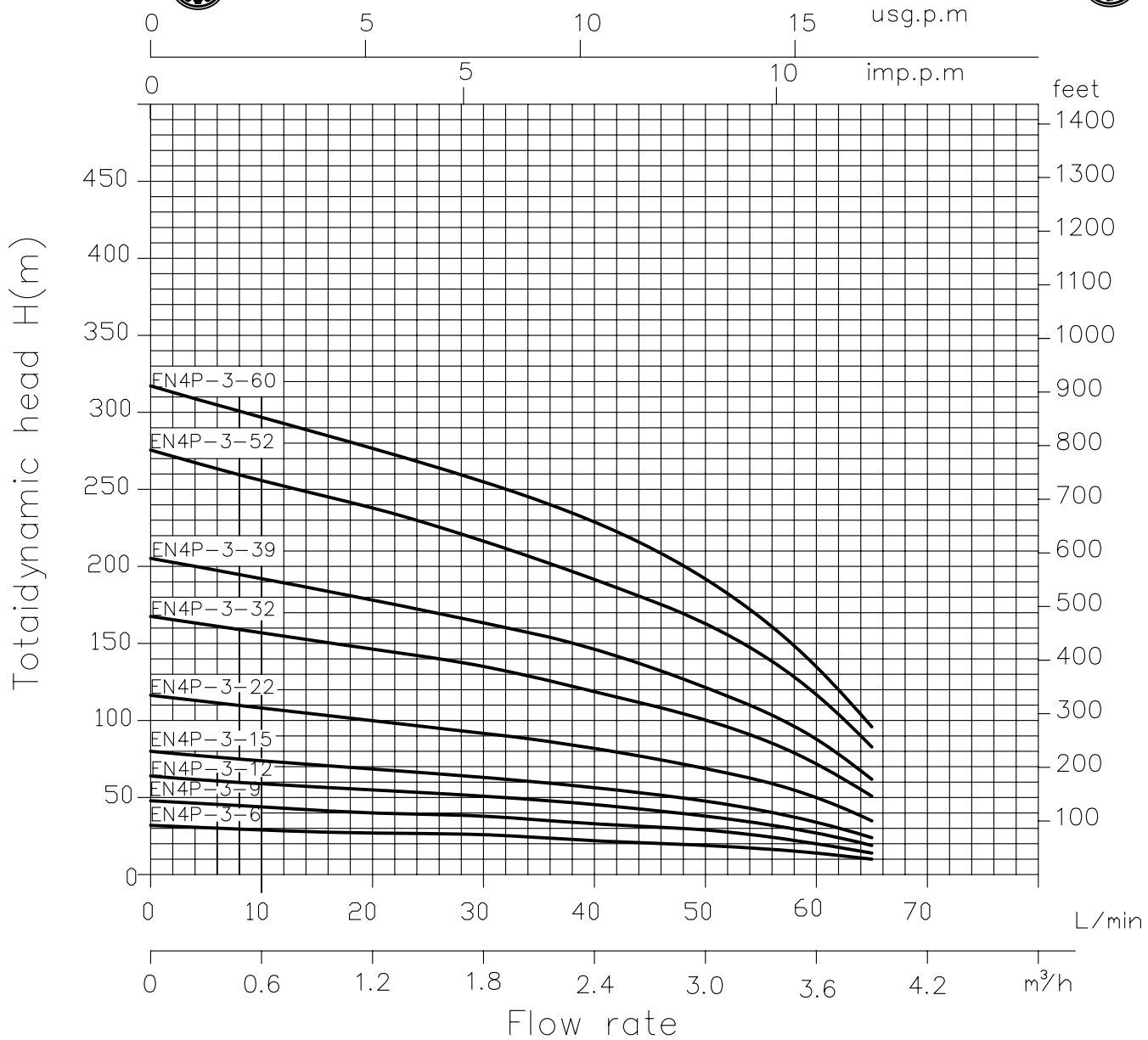
MODEL		P <sub>2</sub>		DELIVERY n ≈ 2850r/min						DN	
1~ 220V-240V	3~ 380V-415V	KW	HP	Q <sup>m³/h</sup> l/min	0	0.6	1.2	1.8	2.4		3.0
EN4P-2-9M	EN4P-2-9	0.37	0.5	H(m)	50	44	41	35	30	22	1¼"/1½"
EN4P-2-13M	EN4P-2-13	0.55	0.75		72	64	59	51	43	31	1¼"/1½"
EN4P-2-18M	EN4P-2-18	0.75	1.0		100	89	81	70	59	44	1¼"/1½"
EN4P-2-23M	EN4P-2-23	1.1	1.5		128	113	104	90	75	56	1¼"/1½"
EN4P-2-28M	EN4P-2-28	1.5	2.0		155	138	126	109	92	68	1¼"/1½"
EN4P-2-40M	EN4P-2-40	2.2	3.0		222	217	198	172	144	106	1¼"/1½"
	EN4P-2-55	3.0	4.0		305	271	248	215	180	133	1¼"/1½"
	EN4P-2-65	3.7	5.0		360	320	293	254	213	157	1¼"/1½"
	EN4P-2-75	4.0	5.5		416	370	338	293	246	181	1¼"/1½"

MANUFACTURED BY: L.NEMITSAS LTD. LIMASSOL-CYPRUS.

Tel:+35725569225 .Fax:+35725396955. E-mail: [ino@nemitsas.eu.cy](mailto:ino@nemitsas.eu.cy) Web: [www.nemitsas.eu](http://www.nemitsas.eu)



NEMITSAS PERFORMANCE CURVES AT 50 Hz



IMPELLER MATERIAL :Stainless Steel or Plastic PPO  
 BOWL MATERIAL :Stainless Steel or Plastic PPO

**TYPE EN4P-3**

WORKING CONDITIONS  
 Water temperature up to 55°C  
 Minimum internal diameter of well:102mm

CONDITIONS OF TESTING : TEMPERATURE : 15°C SPEED: 2850 R.P.M.  
 These performances refer to cold water with no dissolved gases PRESSURE : 1Atm

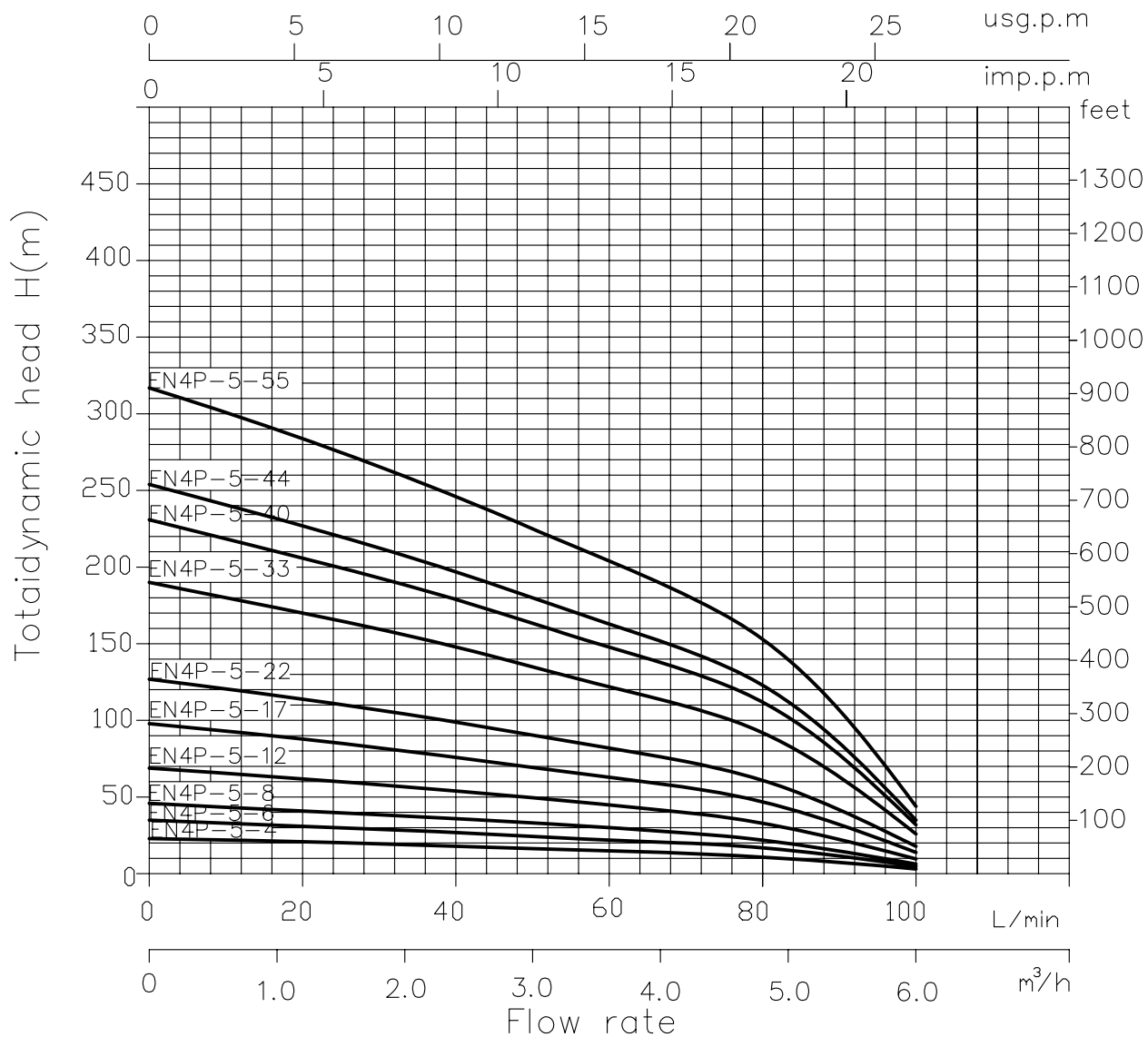
MODEL		P <sub>2</sub>		DELIVERY n ≈ 2850r/min									
1~ 220V-240V	3~ 380V-415V	KW	HP	Q m³/h l/min	0	0.6	1.2	1.8	2.4	3.0	3.6	3.9	DN
					0	10	20	30	40	50	60	65	
EN4P-3-6M	EN4P-3-6	0.37	0.5	H(m)	32	29	27	26	22	19	14	10	1¼"/1½"
EN4P-3-9M	EN4P-3-9	0.55	0.75		48	44	40	38	33	29	20	14	1¼"/1½"
EN4P-3-12M	EN4P-3-12	0.75	1.0		64	59	53	51	44	38	27	19	1¼"/1½"
EN4P-3-15M	EN4P-3-15	1.1	1.5		80	74	67	64	55	48	34	24	1¼"/1½"
EN4P-3-22M	EN4P-3-22	1.5	2.0		117	108	98	94	80	70	50	35	1¼"/1½"
EN4P-3-32M	EN4P-3-32	2.2	3.0		170	157	142	136	117	102	72	51	1¼"/1½"
	EN4P-3-39	3.0	4.0		207	191	174	166	142	125	88	62	1¼"/1½"
	EN4P-3-52	3.7	5.0		276	255	231	221	190	166	117	83	1¼"/1½"
	EN4P-3-60	4.0	5.5		318	294	267	255	219	192	135	96	1¼"/1½"

MANUFACTURED BY: L.NEMITSAS LTD. LIMASSOL-CYPRUS.

Tel:+35725569225 .Fax:+35725396955. E-mail: [info@nemitsas.eu](mailto:info@nemitsas.eu) Web: [www.nemitsas.eu](http://www.nemitsas.eu)



NEMITSAS PERFORMANCE CURVES AT 50 Hz



IMPELLER MATERIAL :Stainless Steel or Plastic PPO  
 BOWL MATERIAL :Stainless Steel or Plastic PPO  
 CONDITIONS OF TESTING : TEMPERATURE : 15°C SPEED : 2850 R.P.M.  
 These performances refer to cold water with no dissolved gases PRESSURE : 1Atm

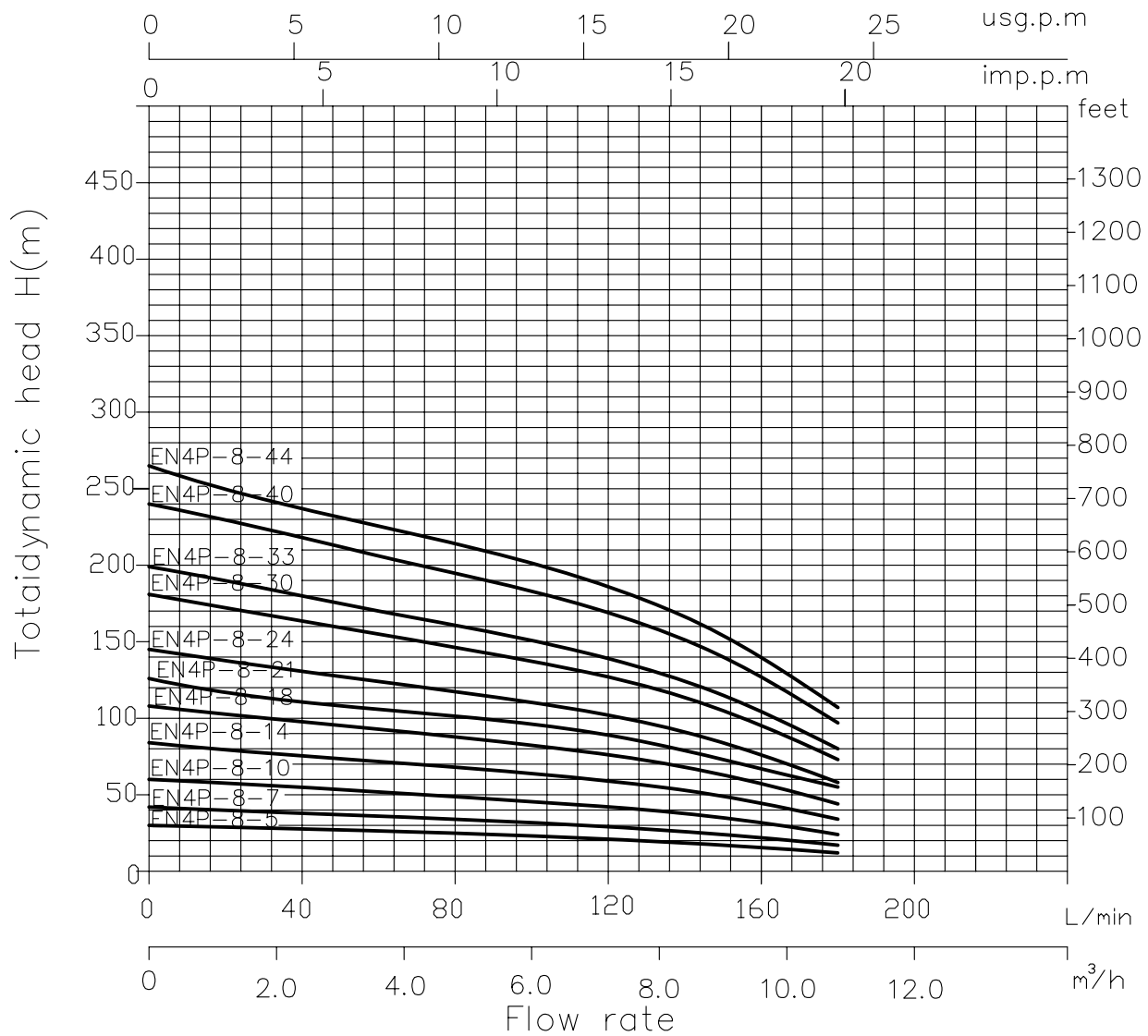
**TYPE EN4P-5**

WORKING CONDITIONS  
 Water temperature up to 55C  
 Minimum internal diameter of well:102mm

MODEL		P <sub>2</sub>		DELIVERY n ≈ 2850r/min						DN	
1~ 220V-240V	3~ 380V-415V	KW	HP	Q <sup>m³/h</sup> l/min	0	1.2	2.4	3.6	4.8		6
EN4P-5-4M	EN4P-5-4	0.37	0.5	H(m)	23	21	18	15	11	3.2	1¼"/1½"
EN4P-5-6M	EN4P-5-6	0.55	0.75		35	31	27	22	17	4.8	1¼"/1½"
EN4P-5-8M	EN4P-5-8	0.75	1.0		46	41	36	30	22	6.4	1¼"/1½"
EN4P-5-12M	EN4P-5-12	1.1	1.5		69	62	54	45	33	9.6	1¼"/1½"
EN4P-5-17M	EN4P-5-17	1.5	2.0		98	88	76	63	47	14	1¼"/1½"
	EN4P-5-22	2.2	3.0		127	114	99	82	61	18	1¼"/1½"
	EN4P-5-33	3.0	4.0		190	170	148	122	92	26	1¼"/1½"
	EN4P-5-40	3.7	5.0		231	206	179	148	112	32	1¼"/1½"
	EN4P-5-44	4.0	5.5		254	227	197	163	123	35	1¼"/1½"
	EN4P-5-55	5.5	7.5		317	284	246	204	153	44	1¼"/1½"



NEMITSAS PERFORMANCE CURVES AT 50 Hz



IMPELLER MATERIAL :Stainless Steel or Plastic PPO  
 BOWL MATERIAL :Stainless Steel or Plastic PPO

**TYPE  
 EN4P-8**

WORKING CONDITIONS  
 Water temperature up to 55°C  
 Minimum internal diameter of well:102mm

CONDITIONS OF TESTING : TEMPERATURE : 15°C SPEED : 2850 R.P.M.  
 These performances refer to cold water with no dissolved gases PRESSURE : 1Atm

MODEL		P <sub>2</sub>		DELIVERY n ≈ 2850r/min								DN
1~ 220V-240V	3~ 380V-415V	KW	HP	Q <sup>m³/h</sup> l/min	0	1.8	3.6	5.4	7.2	9.0	10.8	
EN4P-8-5M	EN4P-8-5	0.75	1.0	H(m)	30	28	26	24	21	17	12	1½"/2"
EN4P-8-7M	EN4P-8-7	1.1	1.5		42	39	36	33	29	24	17	1½"/2"
EN4P-8-10M	EN4P-8-10	1.5	2.0		60	56	52	47	42	35	24	1½"/2"
EN4P-8-14M	EN4P-8-14	2.2	3.0		84	78	72	66	59	49	34	1½"/2"
	EN4P-8-18	3.0	4.0		108	100	93	85	76	63	44	1½"/2"
	EN4P-8-21	3.7	5.0		126	117	108	99	89	73	51	1½"/2"
	EN4P-8-24	4.0	5.5		145	134	124	114	102	84	58	1½"/2"
	EN4P-8-30	5.5	7.5		181	168	155	142	127	105	73	1½"/2"
	EN4P-8-33	5.5	7.5		199	185	170	156	139	115	80	1½"/2"
	EN4P-8-40	7.5	10.0		240	224	206	189	169	140	97	1½"/2"
	EN4P-8-44	7.5	10.0		265	246	227	208	186	154	107	1½"/2"

MANUFACTURED BY: L.NEMITSAS LTD. LIMASSOL-CYPRUS.

Tel:+35725569225 .Fax:+35725396955. E-mail: [info@nemitsas.eu](mailto:info@nemitsas.eu) Web: [www.nemitsas.eu](http://www.nemitsas.eu)

## SUBMERSIBLE ELECTRIC PUMP INSTALLATION DIAGRAM

