

L.Nemitsas Ltd - Head Office

P.O.Box 54436

3724 Limassol, Cyprus

Tel: +357 25569225 & 25569226

Fax: +357 25 396955

L.Nemitsas Ltd - Nicosia Branch

F.Tsigaridi 19 Str.

2235, Latsia - Nicosia

Tel: +357-22467366

Fax: +357-22467372



E-mail: info@nemitsas.eu

URL: www.nemitsas.eu



SUBMERSIBLE ELECTROPUMPS 50 HZ

WATER SYSTEMS





CASTED STAINLESS STEEL SUBMERSIBLE BOREHOLE PUMP

EN6S – EN8S Series

**6” & 8” Submersible
Electric Pumps**

50 Hz

**MANUFACTURED BY L.NEMITSAS LTD
P.O.Box 54436, Limassol 3724, Cyprus
Tel:+35725569225 Fax:+35725396955
[e-mail:info@nemitsas.eu](mailto:info@nemitsas.eu)**



Parts List

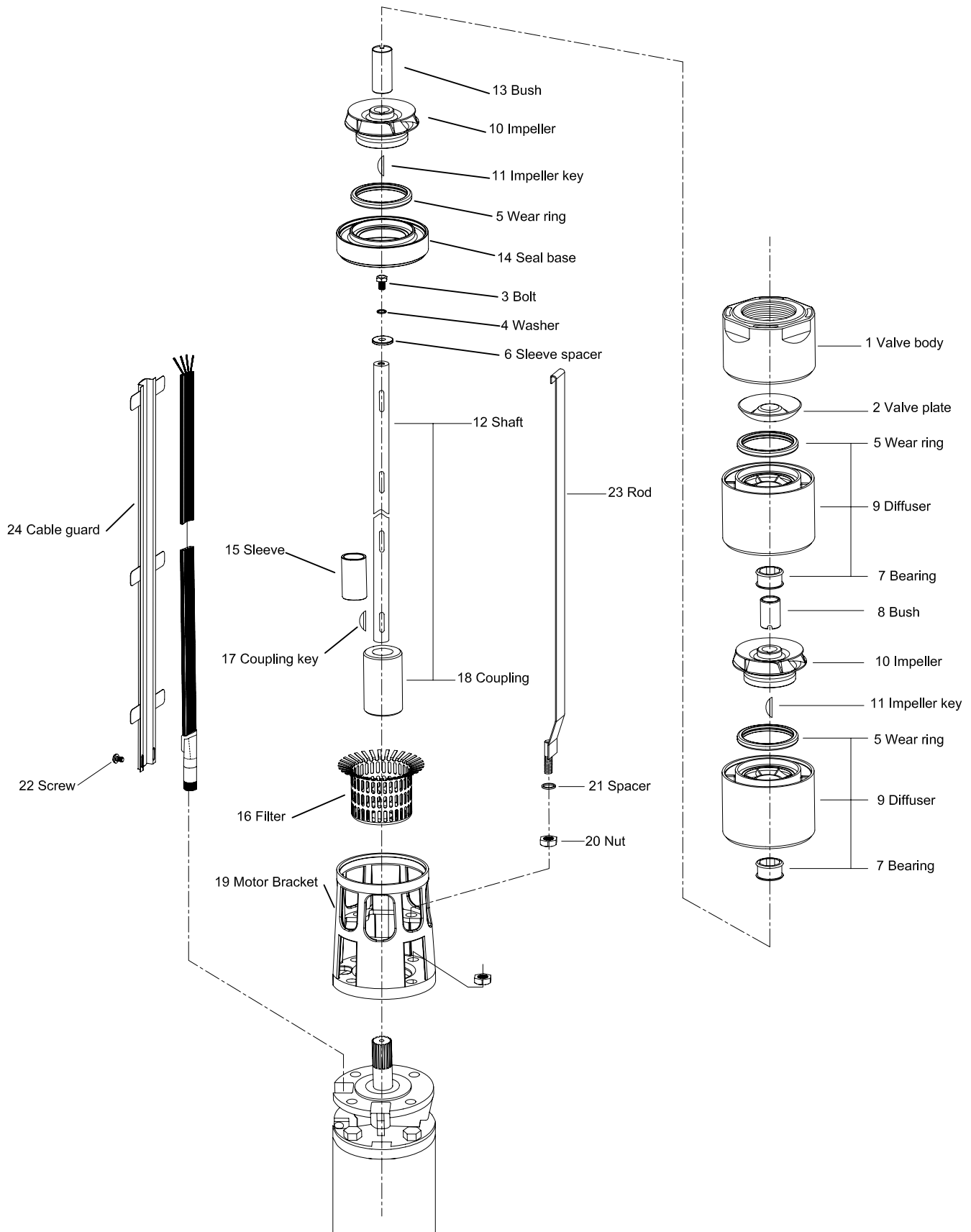


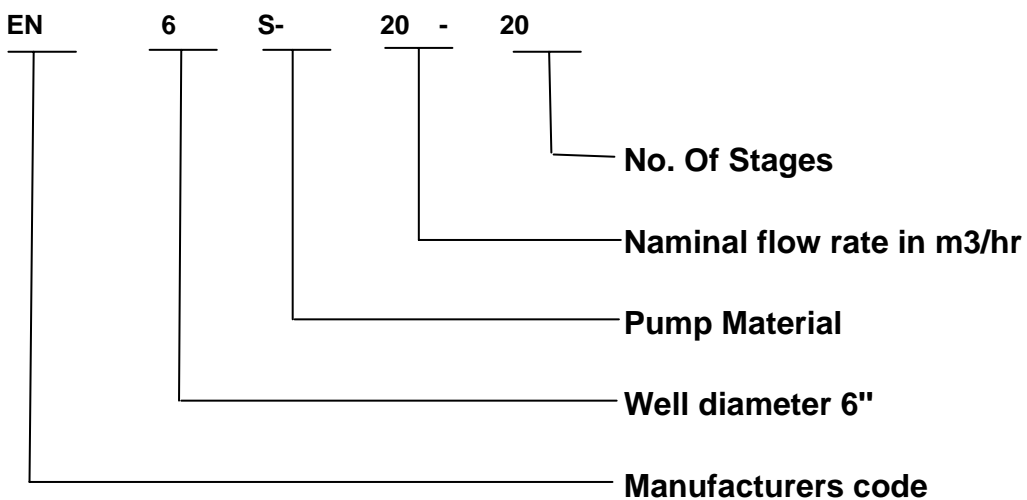


TABLE OF MATERIALS

Ref. No.	Name	MATERIAL	REFERENCE STANDARDS	
			EUROPE	USA
1	Valve Body	Stainless Steel	EN 10213-4 - GX5CrNi19-10 (1.4308)	AISI 304 CAST
2	Valve Plate	Stainless Steel	EN 10088-1 - X5CrNi18-10 (1.4301)	AISI 304
3	Bolt	Stainless Steel	EN 10088-1 - X5CrNi18-10 (1.4301)	AISI 304
4	Washer	Stainless Steel	EN 10088-1 - X5CrNi18-10 (1.4301)	AISI 304
5	Wear Ring	Technopolymer PPO		
6	Sleeve Spacer	Stainless Steel	EN 10088-1 - X17CrNi16-2 (1.4057)	AISI 431
7	Bearing	Technopolymer PPO		
8	Bush	Stainless Steel	EN 10088-1 - X5CrNi18-10 (1.4301)	AISI 304
9	Diffuser	Stainless Steel	EN 10213-4 - GX5CrNi19-10 (1.4308)	AISI 304 CAST
10	Impeller	Stainless Steel	EN 10213-4 - GX5CrNi19-10 (1.4308)	AISI 304 CAST
11	Impeller Key	Stainless Steel	EN 10088-1 - X5CrNi18-10 (1.4301)	AISI 304
12	Shaft	Stainless Steel	EN 10088-1 - X5CrNiMo17-12-2 (1.4401)	AISI 316
13	Bush	Stainless Steel	EN 10088-1 - X5CrNi18-10 (1.4301)	AISI 304
14	Seal Base	Stainless Steel	EN 10213-4 - GX5CrNi19-10 (1.4308)	AISI 304 CAST
15	Sleeve	Stainless Steel	EN 10088-1 - X5CrNi18-10 (1.4301)	AISI 304
16	Filter	Stainless Steel	EN 10088-1 - X5CrNi18-10 (1.4301)	AISI 304
17	Coupling Key	Stainless Steel	EN 10088-1 - X5CrNi18-10 (1.4301)	AISI 304
18	Coupling	Stainless Steel	EN 10088-1 - X17CrNi16-2 (1.4057)	AISI 431
19	Motor Braket	Stainless Steel	EN 10213-4 - GX5CrNi19-10 (1.4308)	AISI 304 CAST
20	Nut	Stainless Steel	EN 10088-1 - X5CrNi18-10 (1.4301)	AISI 304
21	Spacer	Stainless Steel	EN 10088-1 - X5CrNi18-10 (1.4301)	AISI 304
22	Screw	Stainless Steel	EN 10088-1 - X5CrNi18-10 (1.4301)	AISI 304
23	Rob	Stainless Steel	EN 10088-1 - X5CrNi18-10 (1.4301)	AISI 304
24	Cable Guard	Stainless Steel	EN 10088-1 - X5CrNi18-10 (1.4301)	AISI 304

PUMP IDENTIFICATION CODE

FOR EXAMPLE



6"

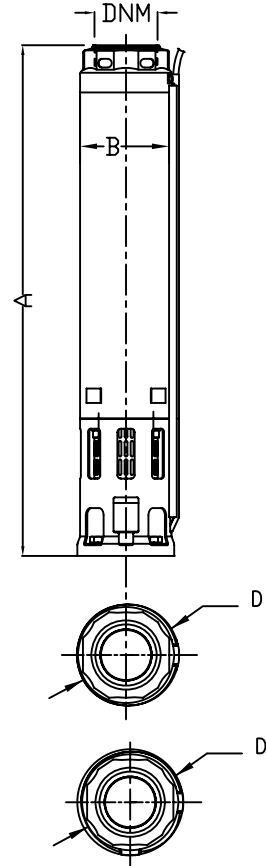
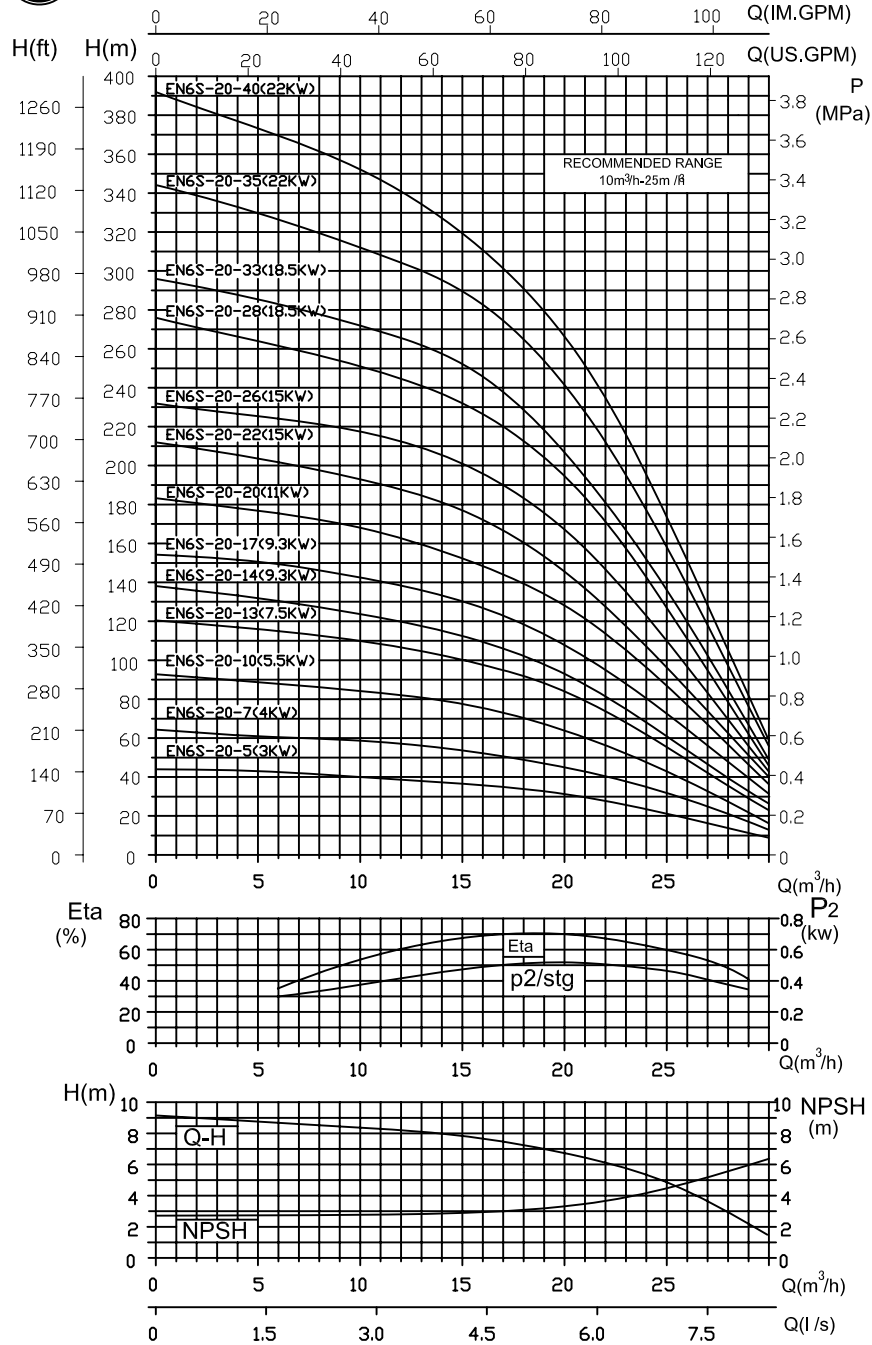


PERFORMANCE TABLE (50HZ)

Model	Power	Q:(l/min)	150	200	250	300	350	400	450	500	550	600	650	700	750	800	850	900	950	1000	1050	1100		
	(kw)	Q:(m ³ /h)	9	12	15	18	21	24	27	30	33	36	39	42	45	48	51	54	57	60	63	66		
EN6S-20-5	3	H:(m)	41	39	37	34	30	24	17															
EN6S-20-7	4		59	56	53	49	43	35	25															
EN6S-20-10	5.5		86	82	78	70	60	48	32															
EN6S-20-13	7.5		112	107	100	91	78	62	44															
EN6S-20-14	9.3		125	120	113	102	88	70	48															
EN6S-20-17	9.3		144	138	130	118	102	80	56															
EN6S-20-20	11		170	163	152	140	120	96	67															
EN6S-20-22	15		196	188	178	160	138	108	72															
EN6S-20-26	15		220	212	202	183	156	124	82															
EN6S-20-28	18.5		254	246	232	212	182	144	92															
EN6S-20-33	18.5		276	264	248	226	196	156	100															
EN6S-20-35	22		316	305	289	265	224	178	116															
EN6S-20-40	22		357	340	319	292	252	196	128															
EN6S-30-3	3	H:(m)					26	25	23	21	20	18	16											
EN6S-30-4	4						35	33	31	28	26	23	18											
EN6S-30-6	5.5						52	49	26	43	38	34	27											
EN6S-30-8	7.5						70	68	62	58	52	44	36											
EN6S-30-10	9.3						86	82	76	71	64	56	46											
EN6S-30-13	11						113	107	100	93	84	74	62											
EN6S-30-14	15						136	131	124	116	105	94	77											
EN6S-30-17	15						146	140	132	124	112	100	82											
EN6S-30-18	18.5						170	165	156	146	132	117	94											
EN6S-30-21	18.5						186	178	168	157	142	126	101											
EN6S-30-23	22						216	208	197	185	166	146	117											
EN6S-30-26	22						229	220	208	195	176	156	125											
EN6S-30-29	30						272	263	250	235	212	186	150											
EN6S-30-34	30						301	288	272	253	229	200	161											
EN6S-46-5	7.5		H:(m)							53	51	48	46	42	38	34	29							
EN6S-46-6	9.3									63	61	58	55	51	46	41	34							
EN6S-46-7	11									73	70	67	63	59	54	47	40							
EN6S-46-9	15									94	90	86	82	76	70	62	52							
EN6S-46-12	18.5									123	118	113	107	100	91	82	70							
EN6S-46-15	22									156	151	143	135	125	115	102	88							
EN6S-46-16	30									188	182	176	168	158	144	127	109							
EN6S-46-20	30									210	204	195	184	172	156	138	118							
EN6S-46-23	37									242	234	225	214	200	183	160	136							
EN6S-60-4	7.5	H:(m)												41	40	38	35	32	29	25	20			
EN6S-60-5	9.3														51	48	45	42	38	34	29	24		
EN6S-60-6	11														61	58	54	50	45	40	34	28		
EN6S-60-8	15														81	77	72	67	61	54	46	37		
EN6S-60-10	18.5														101	96	90	83	75	67	58	47		
EN6S-60-12	22														121	115	108	100	90	80	68	56		
EN6S-60-14	30														152	144	135	125	114	102	89	73		
EN6S-60-16	30														174	167	157	145	132	117	100	83		
EN6S-60-18	37														188	180	168	156	142	124	108	90		
EN6S-60-20	37														210	201	189	174	159	140	121	100		



NEMITSAS PERFORMANCE CURVES AT 50 Hz



IMPELLER MATERIAL :Stainless Steel BOWL DIAMETER : 132 mm
 TYPE :CLOSED BOWL MATERIAL : Stainless Steel

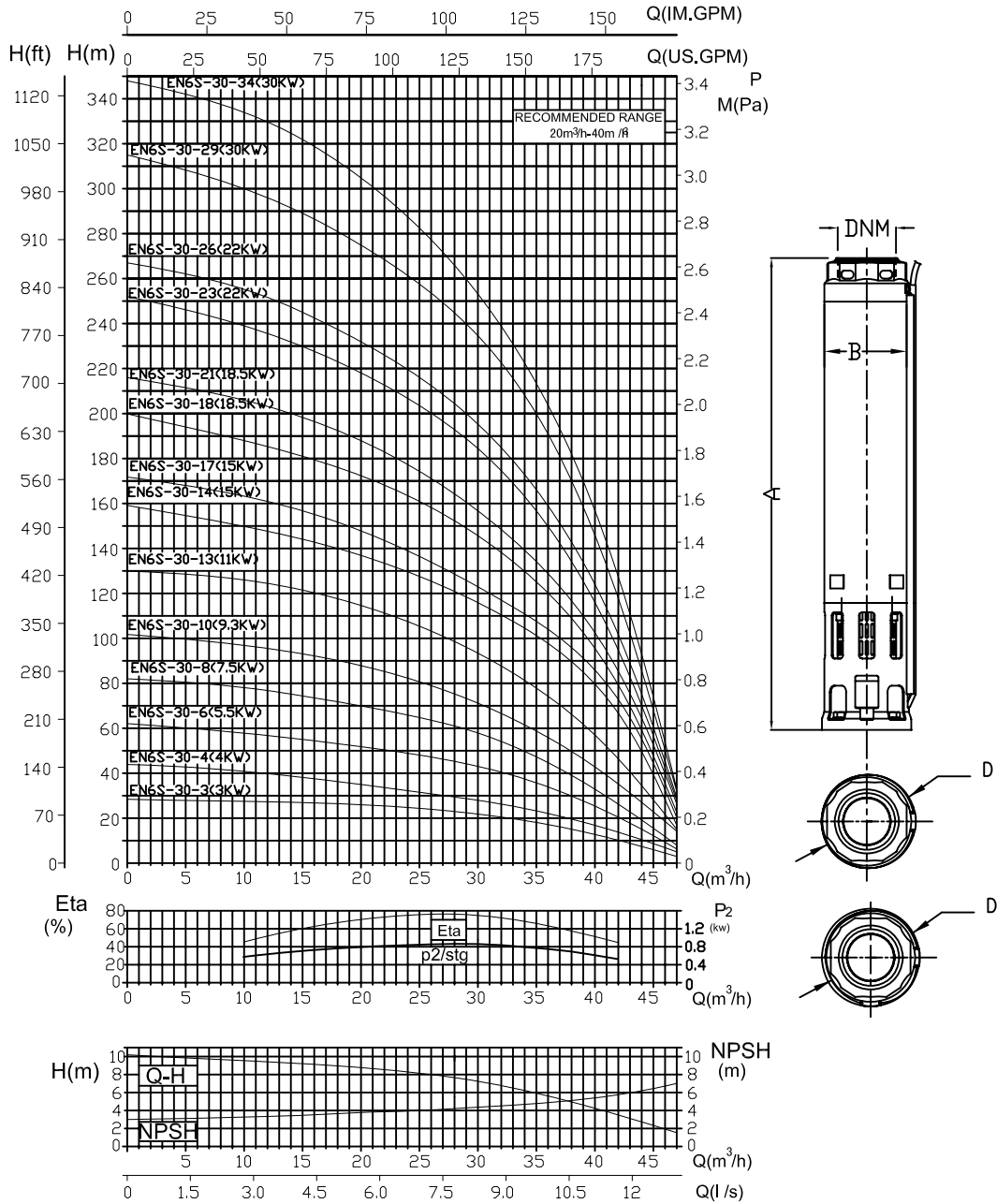
CONDITIONS OF TESTING : TEMPERATURE : 15°C SPEED : 2900 R.P.M.
 These performances refer to cold water with no dissolved gases PRESSURE : 1Atm

TYPE EN6S-20

Pump Type	No. OF STAGES	DNM	D(mm)		Motor Type	Motor Power		Pump Dimension(mm)		Net Weight(Kg) Pump	
			1 Cable	2 Cables		kW	HP	A	B		
EN6S-20-5	5	6" 1/2	138	140	4"	3.00	4.00	548	132	14.5	
EN6S-20-7	7				4"	4.00	5.50	665	132	18.0	
EN6S-20-10	10				4"	5.50	7.50	853	132	23.5	
EN6S-20-13	13				6"	7.50	10.00	1032	132	31.0	
EN6S-20-14	14		6"	140	142	6"	9.30	12.50	1092	132	33.5
EN6S-20-17	17		6"			9.30	12.50	1272	132	40.0	
EN6S-20-20	20		6"			11.00	15.00	1452	132	45.5	
EN6S-20-22	22		6"			15.00	20.00	1572	132	49.5	
EN6S-20-26	26		6"			15.00	20.00	1812	132	56.5	
EN6S-20-28	28		6"			18.50	25.00	1932	132	60.5	
EN6S-20-33	33		6"			18.50	25.00	2232	132	70.5	
EN6S-20-35	35		6"			22.00	30.00	2352	132	74.0	
EN6S-20-40	40		6"			22.00	30.00	2655	132	83.0	



NEMITSAS PERFORMANCE CURVES AT 50 Hz



IMPELLER MATERIAL :Stainless Steel BOWL DIAMETER : 133 mm
 TYPE :CLOSED BOWL MATERIAL :Stainless Steel
 CONDITIONS OF TESTING : TEMPERATURE : 15°C SPEED : 2900 R.P.M.
 These performances refer to cold water with no dissolved gases PRESSURE : 1Atm

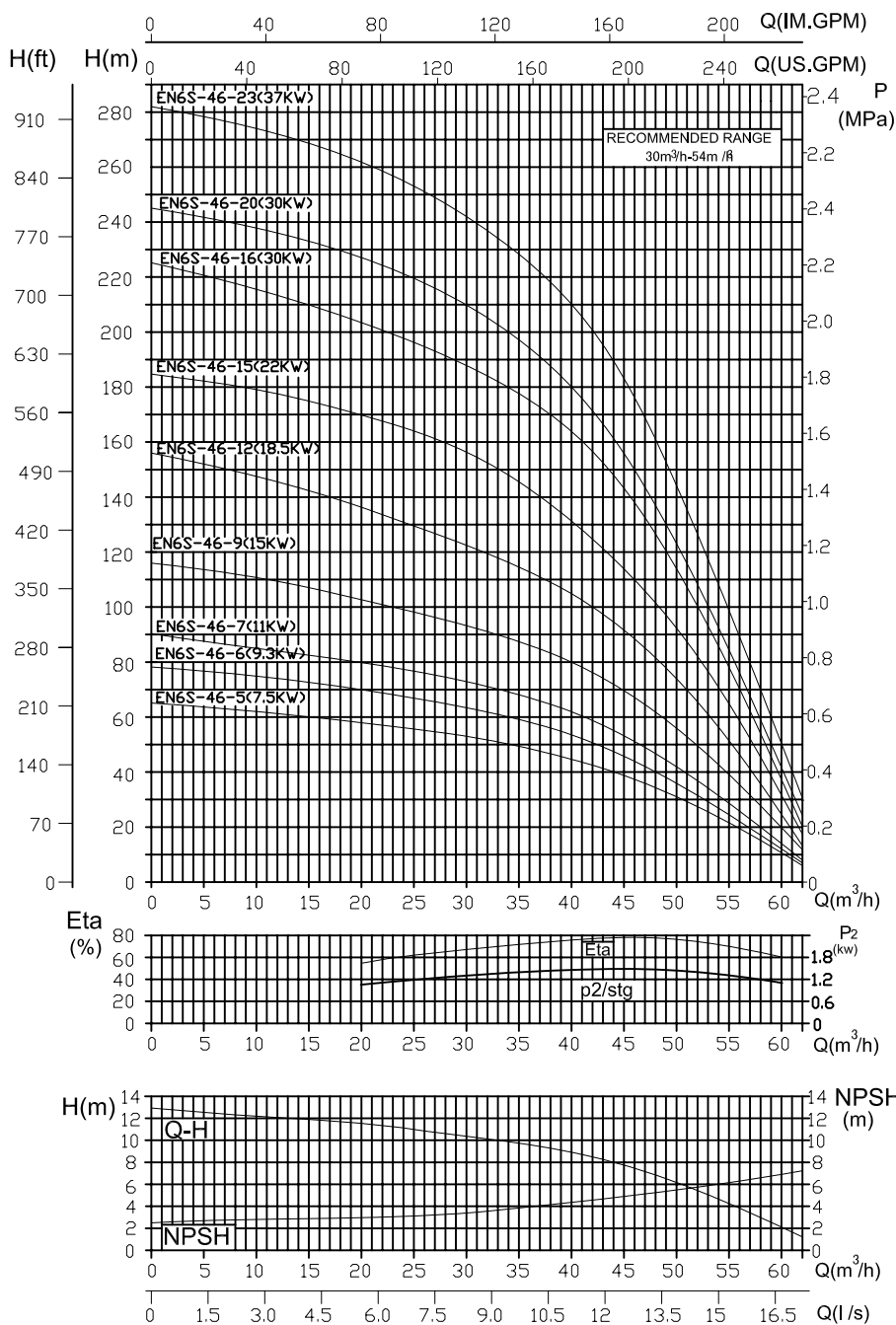
**TYPE
EN6S-30**

Pump Type	No. OF STAGES	DNM	D(mm)		Motor Type	Motor Power		Pump Dimension(mm)		Net Weight(Kg) Pump
			1 Cable	2 Cables		kw	HP	A	B	
EN6S-30-3	3	G 3"	138	140	4"	3.00	4.00	511	133	13.0
EN6S-30-4	4				4"	4.00	5.50	595	133	15.5
EN6S-30-6	6				4"	5.50	7.50	765	133	21.0
EN6S-30-8	8				6"	7.50	10.00	930	133	27.5
EN6S-30-10	10				6"	9.30	12.50	1098	133	33.0
EN6S-30-13	13				6"	11.00	15.00	1348	133	41.0
EN6S-30-14	14		140	142	6"	15.00	20.00	1430	133	44.0
EN6S-30-17	17				6"	15.00	20.00	1680	133	52.0
EN6S-30-18	18				6"	18.50	25.00	1763	133	54.5
EN6S-30-21	21				6"	18.50	25.00	2012	133	62.5
EN6S-30-23	23				6"	22.00	30.00	2178	133	67.5
EN6S-30-26	26				6"	22.00	30.00	2427	133	75.5
EN6S-30-29	29	140	142	6"	30.00	40.00	2676	133	83.5	
EN6S-30-34	34			6"	30.00	40.00	3091	133	97.0	

MANUFACTURED BY: L.NEMITSAS LTD. LIMASSOL-CYPRUS.
 WEB:www.nemitsas.eu.E-mail:info@nemitsas.eu.Tel:+35725569225-26.Fax:+35725396955.



NEMITSAS PERFORMANCE CURVES AT 50 Hz



IMPELLER MATERIAL :Stainless Steel BOWL DIAMETER : 144 mm
 TYPE :CLOSED BOWL MATERIAL :Stainless Steel

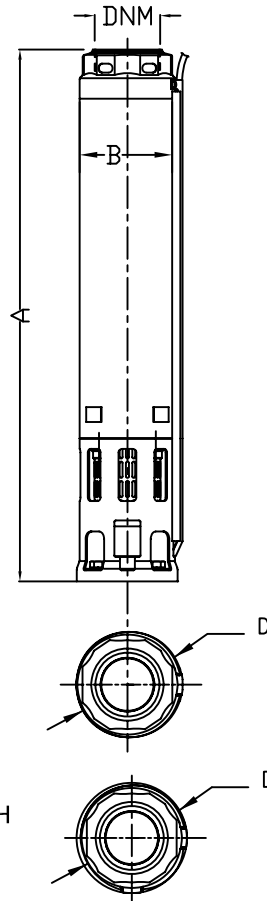
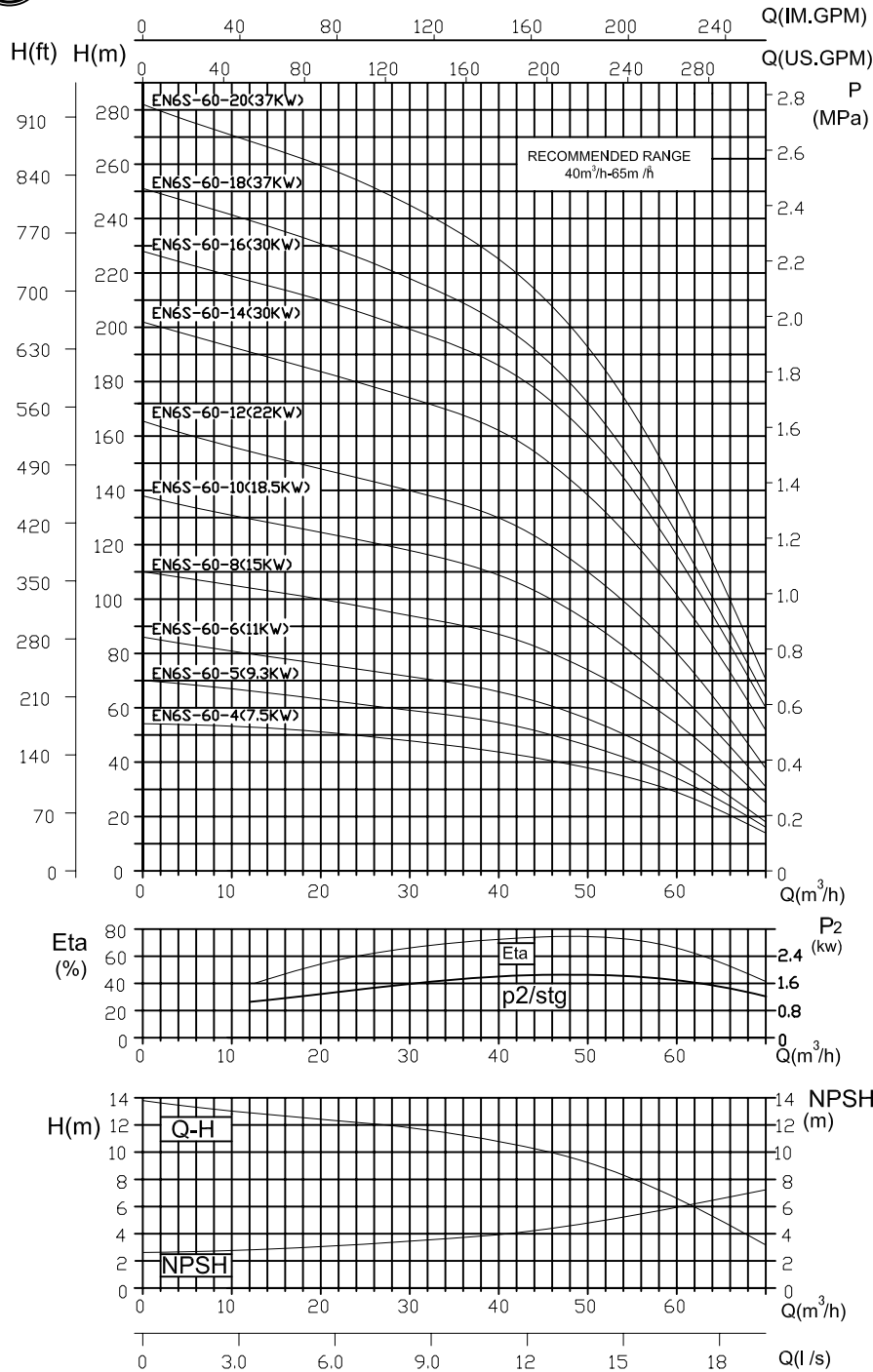
CONDITIONS OF TESTING : TEMPERATURE : 15°C SPEED : 2900 R.P.M.
 These performances refer to cold water with no dissolved gases PRESSURE : 1Atm

**TYPE
EN6S-46**

Pump Type	No. OF STAGES	DNM	D(mm)		Motor Type	Motor kW	Power HP	Pump Dimension(mm)		Net Weight(Kg) Pump
			1 Cable	2 Cables				A	B	
EN6S-46-5	5	G 3"	144	146	6"	7.50	10.00	745	144	23.0
EN6S-46-6	6				6"	9.30	12.50	839	144	26.5
EN6S-46-7	7				6"	11.00	15.00	932	144	29.5
EN6S-46-9	9				6"	15.00	20.00	1122	144	36.0
EN6S-46-12	12				6"	18.50	25.00	1404	144	46.0
EN6S-46-15	15				6"	22.00	30.00	1686	144	56.0
EN6S-46-16	16				6"	30.00	40.00	1780	144	59.0
EN6S-46-20	20				6"	30.00	40.00	2156	144	72.0
EN6S-46-23	23				6"	37.00	50.00	2440	144	82.0



NEMITSAS PERFORMANCE CURVES AT 50 Hz



IMPELLER MATERIAL :Stainless Steel BOWL DIAMETER : 144 mm
 TYPE :CLOSED BOWL MATERIAL :Stainless Steel

CONDITIONS OF TESTING : TEMPERATURE : 15°C SPEED : 2900 R.P.M.
 These performances refer to cold water with no dissolved gases PRESSURE : 1Atm

TYPE EN6S-60

Pump Type	No. OF STAGES	DNM	D(mm)		Motor Type	Motor kW	Power HP	Pump Dimension(mm)		Net Weight(Kg) Pump
			1 Cable	2 Cables				A	B	
EN6S-60-4	4	G 3"	144	146	6"	7.50	10.00	655	144	20.0
EN6S-60-5	5				6"	9.30	12.50	745	144	23.0
EN6S-60-6	6				6"	11.00	15.00	839	144	26.5
EN6S-60-8	8				6"	15.00	20.00	1030	144	34.0
EN6S-60-10	10				6"	18.50	25.00	1218	144	40.0
EN6S-60-12	12				6"	22.00	30.00	1404	144	47.0
EN6S-60-14	14				6"	30.00	40.00	1592	144	55.0
EN6S-60-16	16				6"	30.00	40.00	1780	144	61.5
EN6S-60-18	18				6"	37.00	50.00	1968	144	68.0
EN6S-60-20	20				6"	37.00	50.00	2156	144	73.0

Parts List

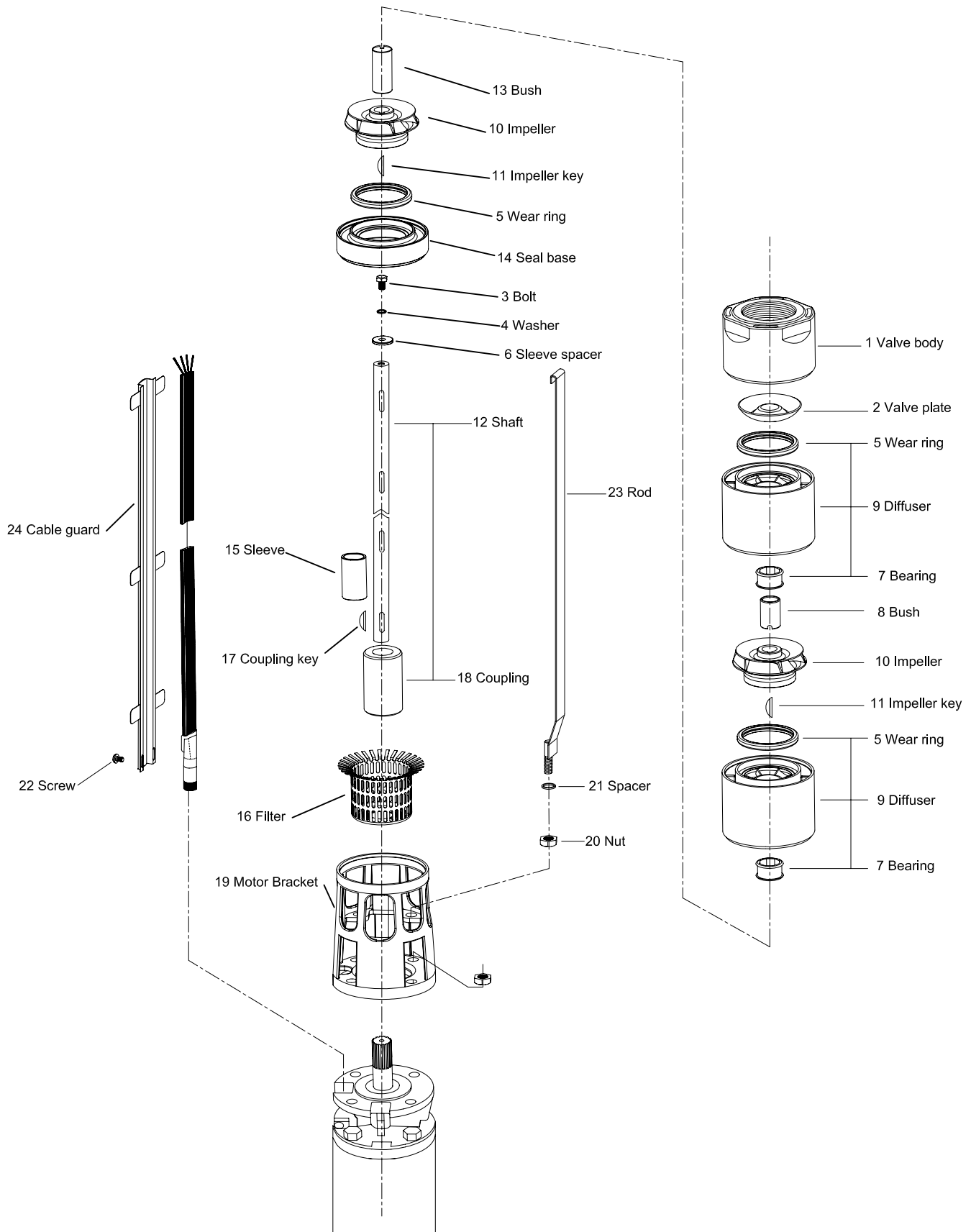


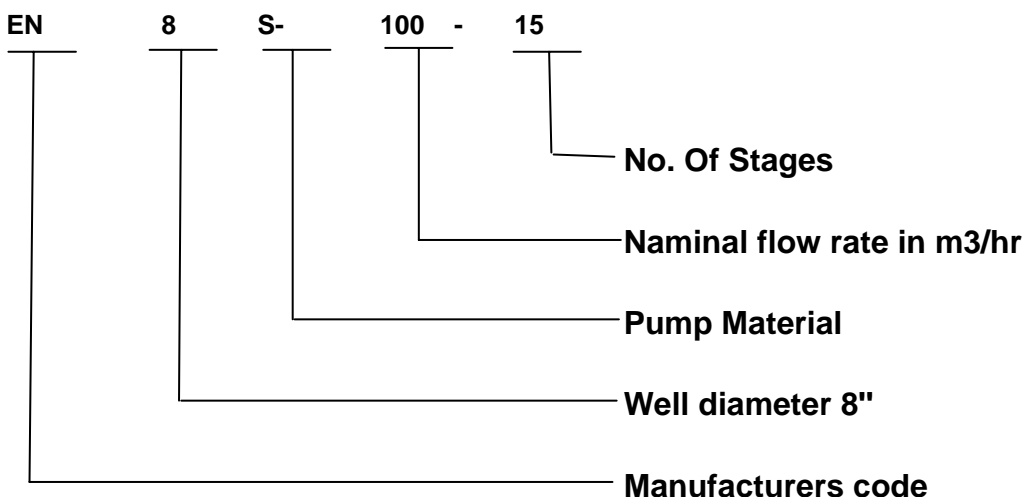


TABLE OF MATERIALS

Ref. No.	Name	MATERIAL	REFERENCE STANDARDS	
			EUROPE	USA
1	Valve Body	Stainless Steel	EN 10213-4 - GX5CrNi19-10 (1.4308)	AISI 304 CAST
2	Valve Plate	Stainless Steel	EN 10088-1 - X5CrNi18-10 (1.4301)	AISI 304
3	Bolt	Stainless Steel	EN 10088-1 - X5CrNi18-10 (1.4301)	AISI 304
4	Washer	Stainless Steel	EN 10088-1 - X5CrNi18-10 (1.4301)	AISI 304
5	Wear Ring	Technopolymer PPO		
6	Sleeve Spacer	Stainless Steel	EN 10088-1 - X17CrNi16-2 (1.4057)	AISI 431
7	Bearing	Technopolymer PPO		
8	Bush	Stainless Steel	EN 10088-1 - X5CrNi18-10 (1.4301)	AISI 304
9	Diffuser	Stainless Steel	EN 10213-4 - GX5CrNi19-10 (1.4308)	AISI 304 CAST
10	Impeller	Stainless Steel	EN 10213-4 - GX5CrNi19-10 (1.4308)	AISI 304 CAST
11	Impeller Key	Stainless Steel	EN 10088-1 - X5CrNi18-10 (1.4301)	AISI 304
12	Shaft	Stainless Steel	EN 10088-1 - X17CrNi16-2 (1.4057)	AISI 431
13	Bush	Stainless Steel	EN 10088-1 - X5CrNi18-10 (1.4301)	AISI 304
14	Seal Base	Stainless Steel	EN 10213-4 - GX5CrNi19-10 (1.4308)	AISI 304 CAST
15	Sleeve	Stainless Steel	EN 10088-1 - X5CrNi18-10 (1.4301)	AISI 304
16	Filter	Stainless Steel	EN 10088-1 - X5CrNi18-10 (1.4301)	AISI 304
17	Coupling Key	Stainless Steel	EN 10088-1 - X5CrNi18-10 (1.4301)	AISI 304
18	Coupling	Stainless Steel	EN 10088-1 - X17CrNi16-2 (1.4057)	AISI 431
19	Motor Braket	Stainless Steel	EN 10213-4 - GX5CrNi19-10 (1.4308)	AISI 304 CAST
20	Nut	Stainless Steel	EN 10088-1 - X5CrNi18-10 (1.4301)	AISI 304
21	Spacer	Stainless Steel	EN 10088-1 - X5CrNi18-10 (1.4301)	AISI 304
22	Screw	Stainless Steel	EN 10088-1 - X5CrNi18-10 (1.4301)	AISI 304
23	Rob	Stainless Steel	EN 10088-1 - X5CrNi18-10 (1.4301)	AISI 304
24	Cable Guard	Stainless Steel	EN 10088-1 - X5CrNi18-10 (1.4301)	AISI 304

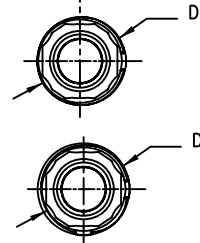
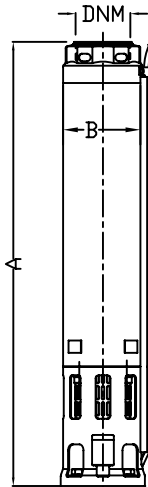
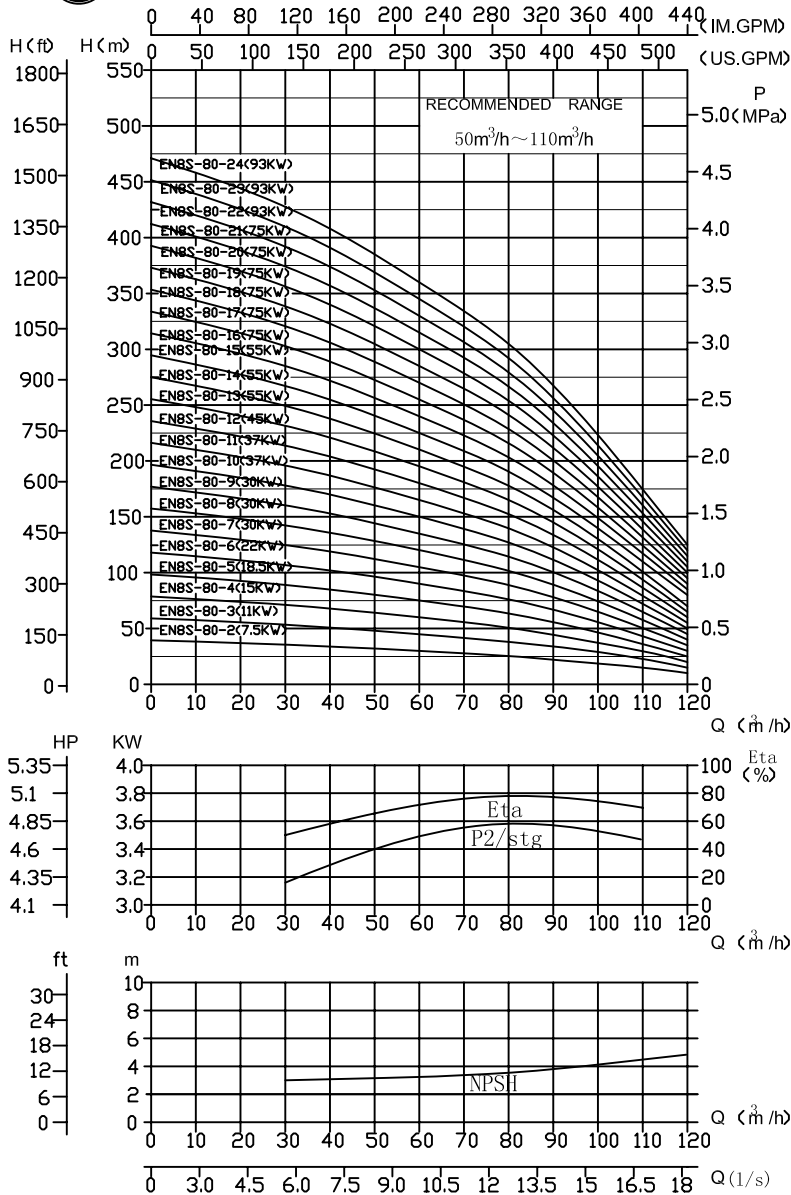
PUMP IDENTIFICATION CODE

FOR EXAMPLE





NEMITSAS PERFORMANCE CURVES AT 50 Hz

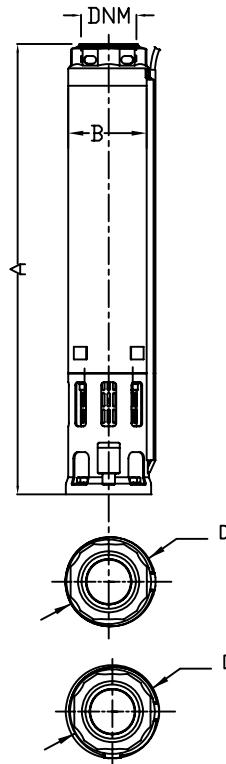
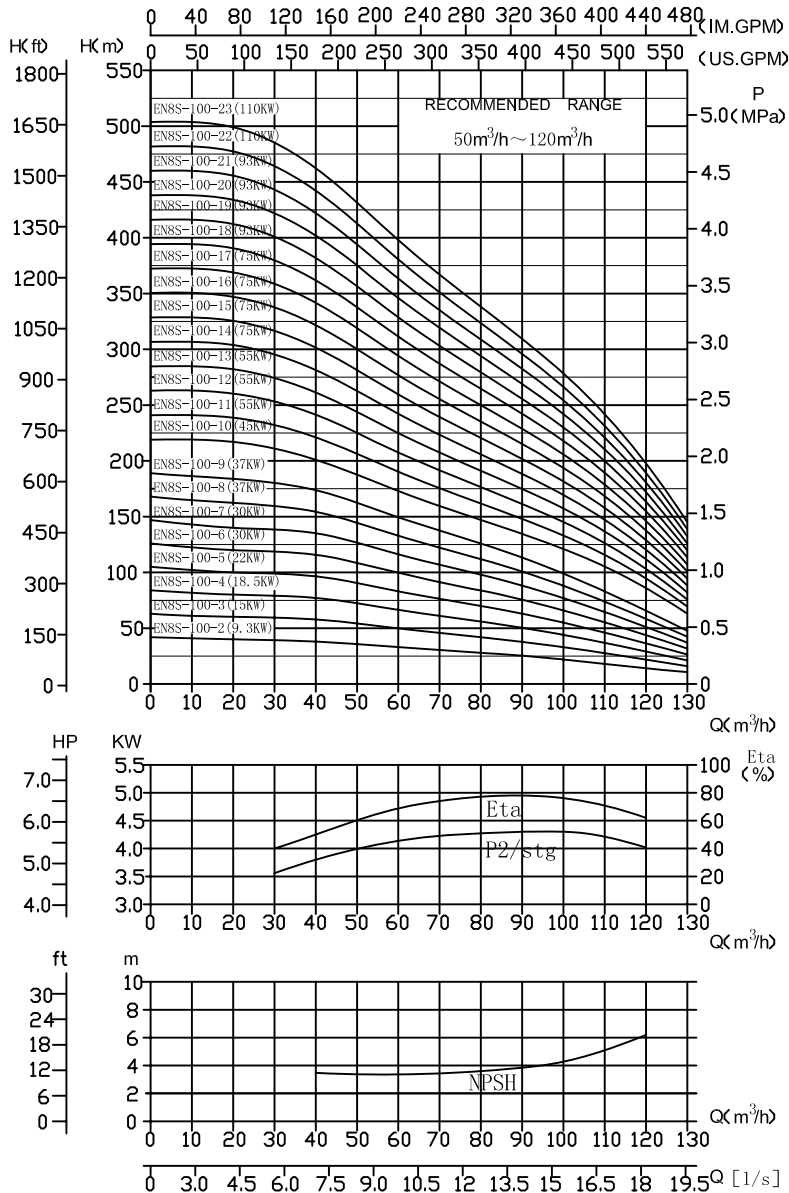


IMPELLER MATERIAL :Stainless Steel TYPE :CLOSED		BOWL DIAMETER : 180 mm BOWL MATERIAL :Stainless Steel		TYPE EN8S-80						
CONDITIONS OF TESTING : TEMPERATURE : 15°C These performances refer to cold water with no dissolved gases				SPEED : 2900 R.P.M. PRESSURE : 1Atm						
Pump Type	No. OF STAGES	DNM	D(mm)		Motor Type	Motor kW	Power HP	Pump Dimension(mm)		Net Weight(Kg) Pump
			1 Cable	2 Cables				A	B	
EN8S-80-2	2	G 4" OR G 5"	180	182	6"	7.50	10.00	625	180	29.0
EN8S-80-3	3				6"	11.00	15.00	751	180	35.5
EN8S-80-4	4				6"	15.00	20.00	877	180	42.0
EN8S-80-5	5				6"	18.50	25.00	1003	180	48.5
EN8S-80-6	6				6"	22.00	30.00	1129	180	55.0
EN8S-80-7	7				6"	30.00	40.00	1255	180	61.5
EN8S-80-8	8				6"	30.00	40.00	1381	180	68.0
EN8S-80-9	9				6"	30.00	40.00	1507	180	74.5
EN8S-80-10	10				6"	37.00	50.00	1633	180	82.0
EN8S-80-11	11				6"	37.00	50.00	1759	180	88.5
EN8S-80-12	12				6"	45.00	60.00	1890	180	95.0
EN8S-80-13	13				182	184	8"	55.00	75.00	2016
EN8S-80-14	14		8"	55.00			75.00	2142	180	108.0
EN8S-80-15	15		8"	55.00			75.00	2268	180	114.5
EN8S-80-16	16		8"	75.00			100.0	2394	180	121.0
EN8S-80-17	17		8"	75.00			100.0	2520	180	127.5
EN8S-80-18	18		8"	75.00			100.0	2646	180	134.0
EN8S-80-19	19		8"	75.00			100.0	2772	180	140.5
EN8S-80-20	20		8"	75.00			100.0	2898	180	147.0
EN8S-80-21	21		8"	75.00			100.0	3024	180	153.5
EN8S-80-22	22		8"	93.00			125.0	3150	180	160.0
EN8S-80-23	23		8"	93.00			125.0	3276	180	166.5
EN8S-80-24	24		8"	93.00			125.0	3402	180	173.0

MANUFACTURED BY: L.NEMITSAS LTD. LIMASSOL-CYPRUS.
WEB:www.nemitsas.eu.E-mail:info@nemitsas.eu.Tel:+35725569225-26.Fax:+35725396955.



NEMITSAS PERFORMANCE CURVES AT 50 Hz

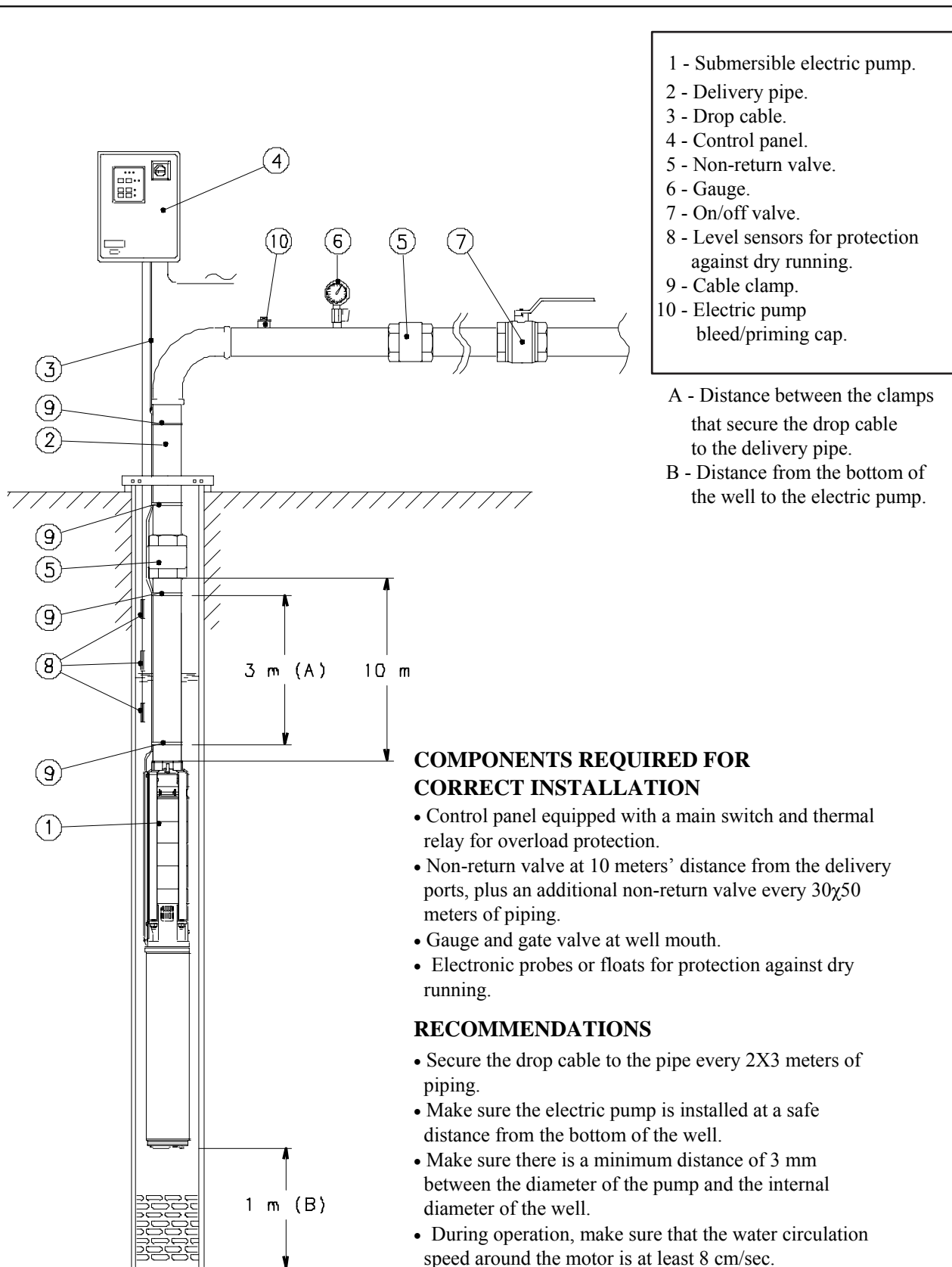


IMPELLER MATERIAL :Stainless Steel BOWL DIAMETER : 180 mm
 TYPE :CLOSED BOWL MATERIAL :Stainless Steel
 CONDITIONS OF TESTING : TEMPERATURE : 15°C SPEED : 2900 R.P.M.
 These performances refer to cold water with no dissolved gases PRESSURE : 1Atm

TYPE EN8S-100

Pump Type	No. OF STAGES	DNM	D(mm)		Motor Type	Motor kW	Power HP	Pump Dimension(mm)		Net Weight(Kg) Pump
			1 Cable	2 Cables				A	B	
EN8S-100-2	2	G 5"	182	186	6"	9.30	12.50	625	180	29.2
EN8S-100-3	3				6"	15.00	20.00	751	180	35.8
EN8S-100-4	4				6"	18.50	25.00	877	180	42.4
EN8S-100-5	5				6"	22.00	30.00	1003	180	49.0
EN8S-100-6	6				6"	30.00	40.00	1129	180	55.6
EN8S-100-7	7				6"	30.00	40.00	1255	180	62.2
EN8S-100-8	8				6"	37.00	50.00	1381	180	68.8
EN8S-100-9	9				6"	37.00	50.00	1507	180	75.4
EN8S-100-10	10				6"	45.00	60.00	1638	180	83.0
EN8S-100-11	11				G 5"	186	190	8"	55.00	75.00
EN8S-100-12	12	8"	55.00	75.00				1890	180	96.2
EN8S-100-13	13	8"	55.00	75.00				2016	180	102.8
EN8S-100-14	14	8"	75.00	100.0				2142	180	109.4
EN8S-100-15	15	8"	75.00	100.0				2268	180	116.0
EN8S-100-16	16	8"	75.00	100.0				2394	180	122.6
EN8S-100-17	17	8"	75.00	100.0				2520	180	129.2
EN8S-100-18	18	8"	93.00	125.0				2646	180	135.8
EN8S-100-19	19	8"	93.00	125.0				2772	180	142.4
EN8S-100-20	20	8"	93.00	125.0				2898	180	149.0
EN8S-100-21	21	8"	93.00	125.0				3024	180	155.6
EN8S-100-22	22	8"	110.0	150.0				3150	180	162.2
EN8S-100-23	23	8"	110.0	150.0				3276	180	168.8

SUBMERSIBLE ELECTRIC PUMP INSTALLATION DIAGRAM



- 1 - Submersible electric pump.
- 2 - Delivery pipe.
- 3 - Drop cable.
- 4 - Control panel.
- 5 - Non-return valve.
- 6 - Gauge.
- 7 - On/off valve.
- 8 - Level sensors for protection against dry running.
- 9 - Cable clamp.
- 10 - Electric pump bleed/priming cap.

A - Distance between the clamps that secure the drop cable to the delivery pipe.
 B - Distance from the bottom of the well to the electric pump.

COMPONENTS REQUIRED FOR CORRECT INSTALLATION

- Control panel equipped with a main switch and thermal relay for overload protection.
- Non-return valve at 10 meters' distance from the delivery ports, plus an additional non-return valve every 30x50 meters of piping.
- Gauge and gate valve at well mouth.
- Electronic probes or floats for protection against dry running.

RECOMMENDATIONS

- Secure the drop cable to the pipe every 2X3 meters of piping.
- Make sure the electric pump is installed at a safe distance from the bottom of the well.
- Make sure there is a minimum distance of 3 mm between the diameter of the pump and the internal diameter of the well.
- During operation, make sure that the water circulation speed around the motor is at least 8 cm/sec.
- Make sure that the minimum dynamic level of the water in the well is at least 1 m above the pump's delivery port.